

124°00'00"E 124°01'30"E 124°03'00"E 124°04'30"E

9°48'00"N
9°46'30"N
9°45'00"N
9°43'30"N
9°42'00"N
9°40'30"N

124°00'00"E
124°01'30"E
124°03'00"E
124°04'30"E

LEGEND

Boundaries

- Municipal Boundary
- Barangay Boundary

Roads

- Provincial Road
- Municipal Road
- Barangay Road

Soil Classification

- Batuan-Faraon Complex
- Faraon Clay
- Lugo Clay
- Sevilla Clay

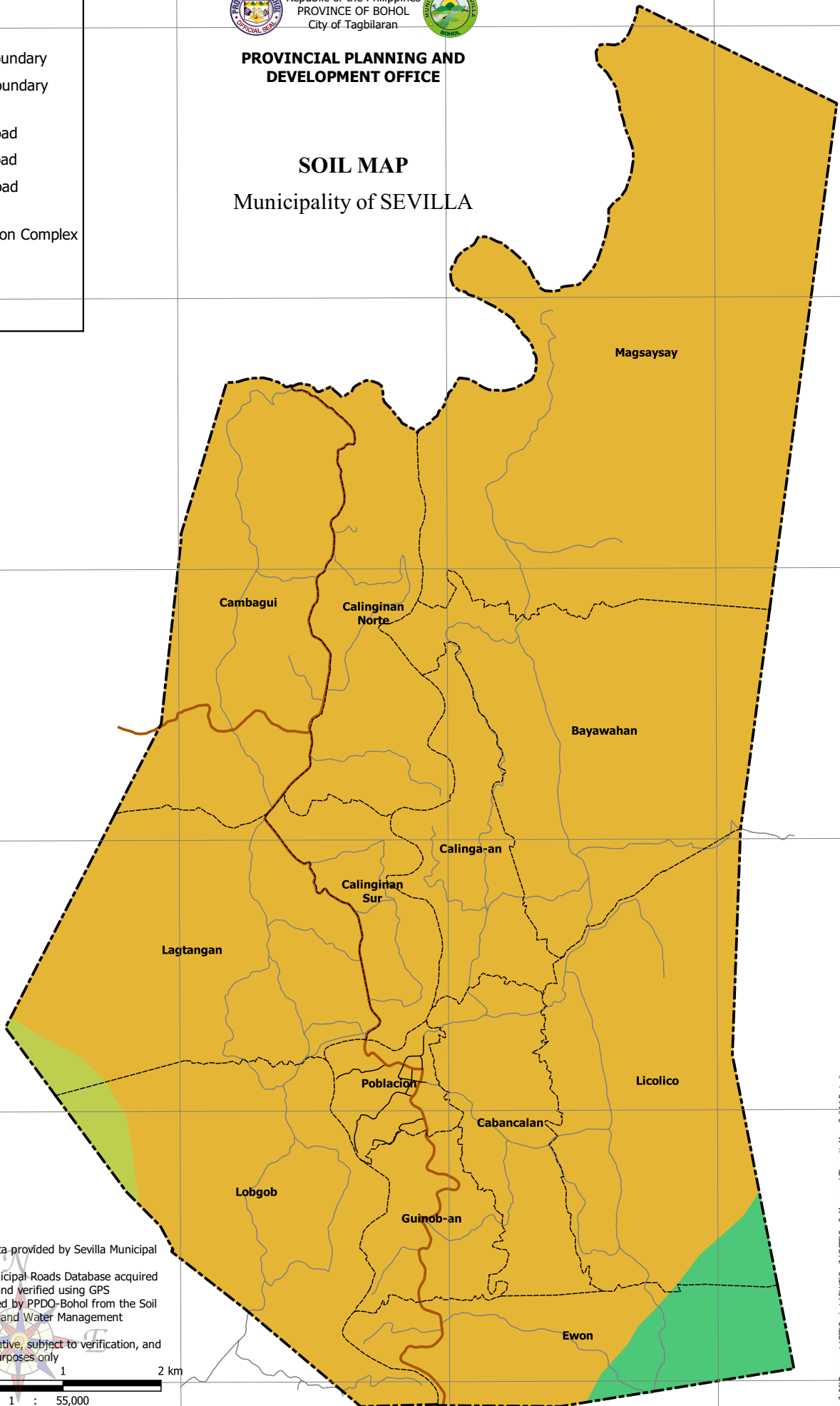


Republic of the Philippines
PROVINCE OF BOHOL
City of Tagbilaran



PROVINCIAL PLANNING AND DEVELOPMENT OFFICE

SOIL MAP Municipality of SEVILLA



- Notes:
1. Boundaries based on data provided by Sevilla Municipal Assessor's Office
 2. Roads based on the Municipal Roads Database acquired through the CRID Project and verified using GPS
 3. Soil Classification digitized by PPDO-Bohol from the Soil Map of the Bureau of Soils and Water Management (BSWM)
 4. This map is not authoritative, subject to verification, and to be used for indicative purposes only



SCALE 1 : 55,000
Universal Transverse Mercator (UTM) zone 51 North
World Geodetic System, 1984 (WGS84)