

124°18'E

124°20'E

124°22'E



Republic of the Philippines
PROVINCE OF BOHOL
City of Tagbilaran

PROVINCIAL PLANNING AND DEVELOPMENT OFFICE

**Hazard Map
RAIN-INDUCED LANDSLIDE
Municipality of SIERRA BULLONES**



SCALE 1 : 65,000
Universal Transvers Mercator (UTM), Zone 51 North
World Geodetic System, 1984 (WGS84)

LEGEND

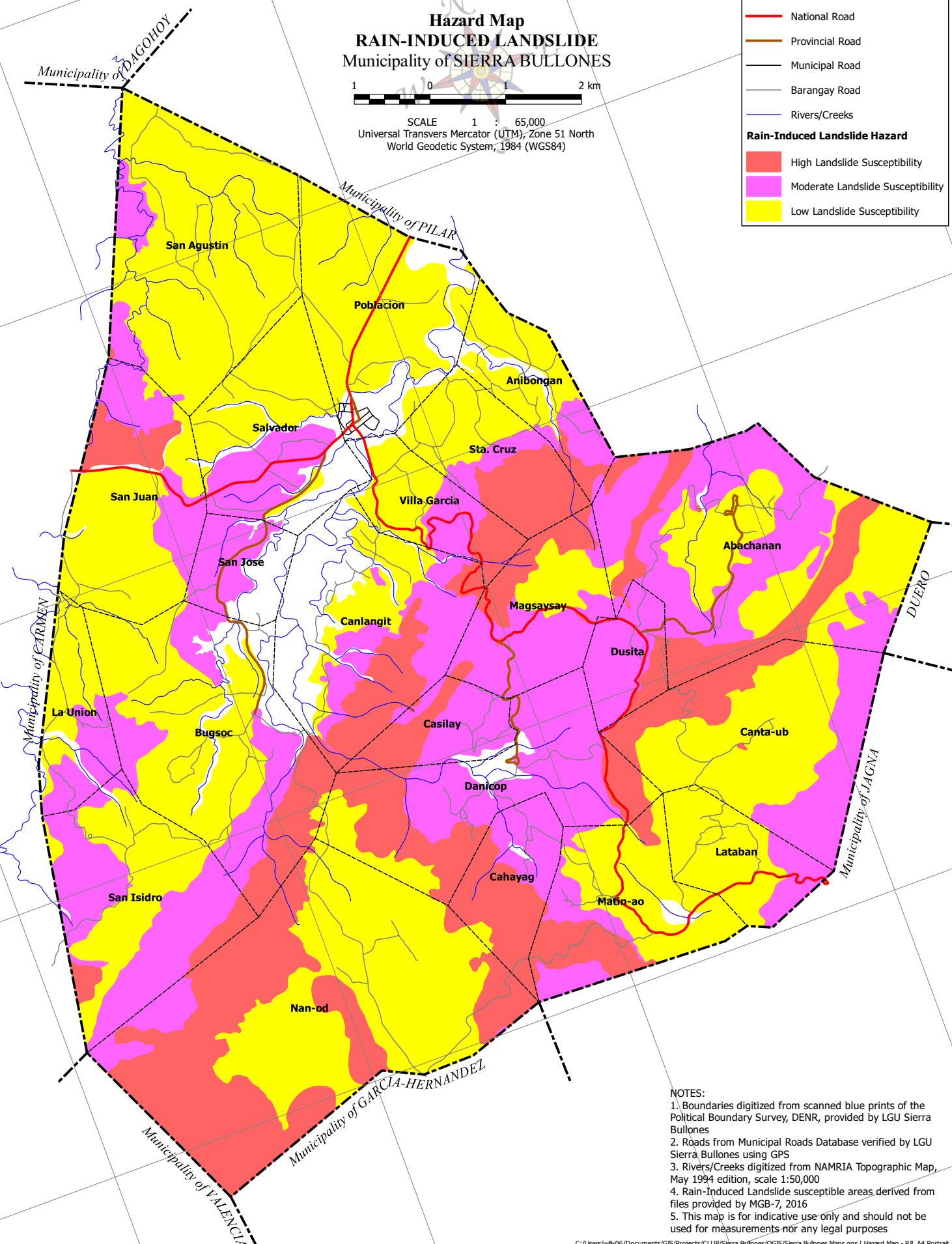
- Municipal Boundary
- Barangay Boundary
- National Road
- Provincial Road
- Municipal Road
- Barangay Road
- Rivers/Creeks

Rain-Induced Landslide Hazard

- High Landslide Susceptibility
- Moderate Landslide Susceptibility
- Low Landslide Susceptibility

9°52'N
9°50'N
9°48'N
9°46'N
9°44'N

N.05c-6
N.88c-6
N.99c-6
N.17c-6
N.27c-6



- NOTES:**
1. Boundaries digitized from scanned blue prints of the Political Boundary Survey, DENR, provided by LGU Sierra Bullones
 2. Roads from Municipal Roads Database verified by LGU Sierra Bullones using GPS
 3. Rivers/Creeks digitized from NAMRIA Topographic Map, May 1994 edition, scale 1:50,000
 4. Rain-Induced Landslide susceptible areas derived from files provided by MGB-7, 2016
 5. This map is for indicative use only and should not be used for measurements nor any legal purposes

124°14'E

124°16'E

124°18'E