

124°18'E

124°20'E

124°22'E



Republic of the Philippines  
PROVINCE OF BOHOL  
City of Tagbilaran

**PROVINCIAL PLANNING AND DEVELOPMENT OFFICE**

**POPULATION DENSITY MAP**  
**Census Year: 1995**  
Municipality of SIERRA BULLONES



SCALE 1 : 65,000  
Universal Transvers Mercator (UTM), Zone 51 North  
World Geodetic System, 1984 (WGS84)

**LEGEND**

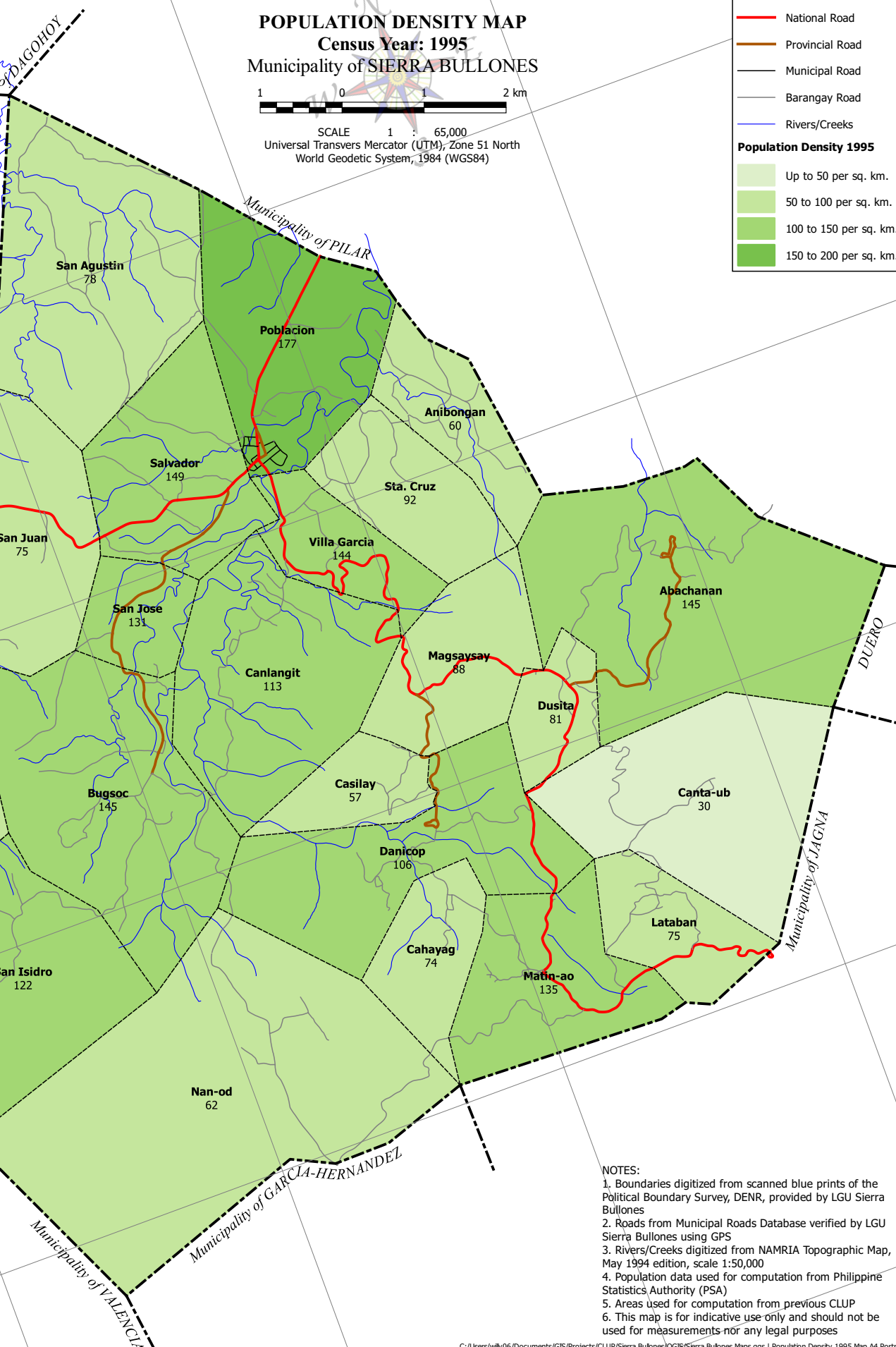
- Municipal Boundary
- Barangay Boundary
- National Road
- Provincial Road
- Municipal Road
- Barangay Road
- Rivers/Creeks

**Population Density 1995**

- Up to 50 per sq. km.
- 50 to 100 per sq. km.
- 100 to 150 per sq. km.
- 150 to 200 per sq. km.

9°52'N  
9°50'N  
9°48'N  
9°46'N  
9°44'N

N.05r-6  
N.08r-6  
N.09r-6  
N.12r-6  
N.17r-6



- NOTES:
1. Boundaries digitized from scanned blue prints of the Political Boundary Survey, DENR, provided by LGU Sierra Bullones
  2. Roads from Municipal Roads Database verified by LGU Sierra Bullones using GPS
  3. Rivers/Creeks digitized from NAMRIA Topographic Map, May 1994 edition, scale 1:50,000
  4. Population data used for computation from Philippine Statistics Authority (PSA)
  5. Areas used for computation from previous CLUP
  6. This map is for indicative use only and should not be used for measurements nor any legal purposes

124°14'E

124°16'E

124°18'E