

124°10'E

124°12'E

124°14'E

124°16'E



Republic of the Philippines
PROVINCE OF BOHOL
City of Tagbilaran



**PROVINCIAL PLANNING AND
DEVELOPMENT OFFICE**

**Hazard Map
EARTHQUAKE-INDUCED
LANDSLIDE**

Municipality of VALENCIA

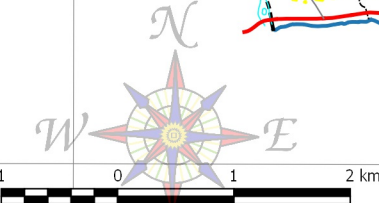
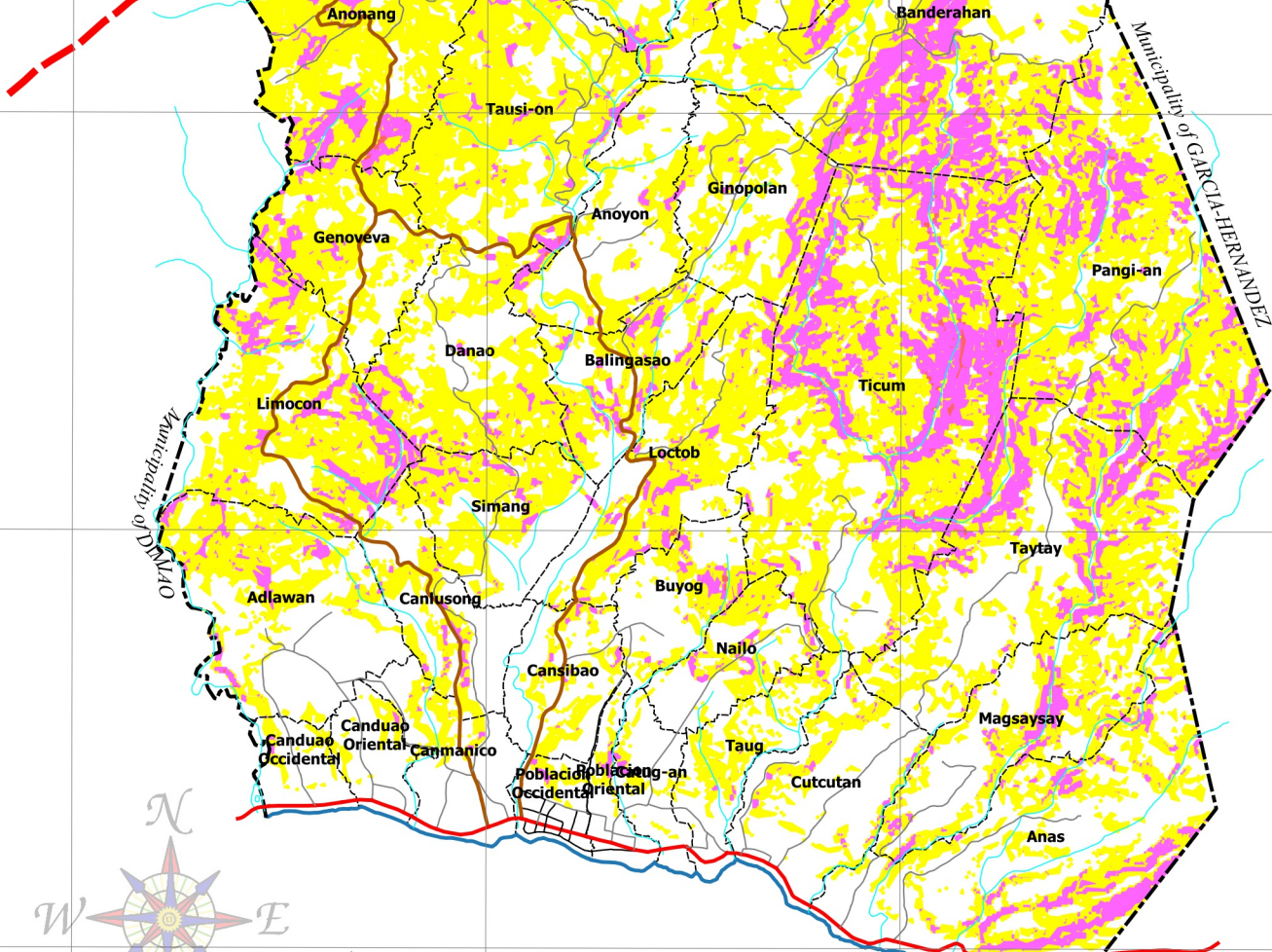
LEGEND

- Coastline
- Municipal Boundary
- Barangay Boundary
- National Road
- Provincial Road
- Municipal Road
- Barangay Road
- Rivers & Creeks

- Ground Rupture**
- Approximate Trace

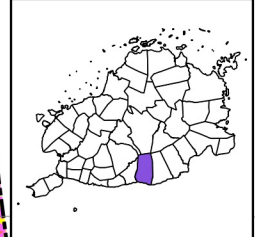
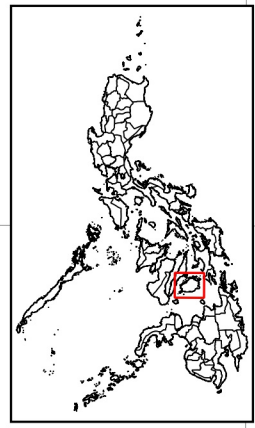
- Earthquake-Induced Landslide**
- High Susceptibility
 - Moderate Susceptibility
 - Low Susceptibility

East Bohol Fault



SCALE 1 : 65,000
Philippines Reference System, 1992 (PRS92)
Philippine Zone 5

NOTES:
1. Boundaries and coastline derived from parcellary Barangay Section Index Map provided by Valencia MAssO and digitized by MPDC
2. Rivers and Creeks digitized by PPDO GIS Unit from NAMRIA Topographic Map sheet 3820-III, scaled at 1:50,000, edition May 1993
3. Roads based on the Municipal Roads Database acquired through CRID Project and verified using GPS
4. Earthquake-Induced Landslide susceptible areas based on files provided by PhilVolcs, 2016
5. This map is for indicative purposes only subject to ground verification



9°44'N
9°42'N
9°40'N
9°38'N
9°36'N

N 44° 0'
N 42° 0'
N 40° 0'
N 38° 0'
N 36° 0'

124°10'E

124°12'E

124°14'E

124°16'E

C:\Users\w\OneDrive\Documents\GIS Projects\CLUP_Valencia\GIS\Valencia_CLIP_2019-2028.aprx | Headers - EL_A1 Postref | N 36° 0'