

124°10'E

124°12'E

124°14'E

124°16'E



Republic of the Philippines  
PROVINCE OF BOHOL  
City of Tagbilaran



**PROVINCIAL PLANNING AND  
DEVELOPMENT OFFICE**

**Hazard Map  
MULTI-HAZARD**

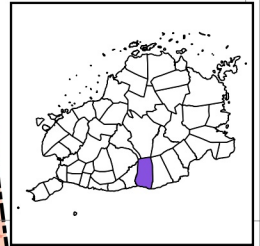
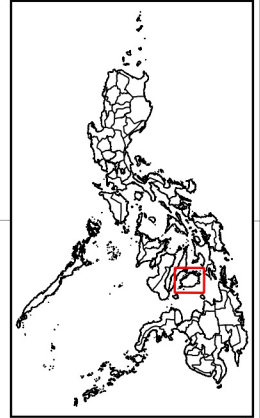
Municipality of VALENCIA

**LEGEND**

- Coastline
- Municipal Boundary
- Barangay Boundary
- National Road
- Provincial Road
- Municipal Road
- Barangay Road
- Rivers & Creeks

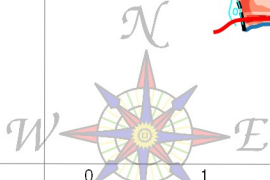
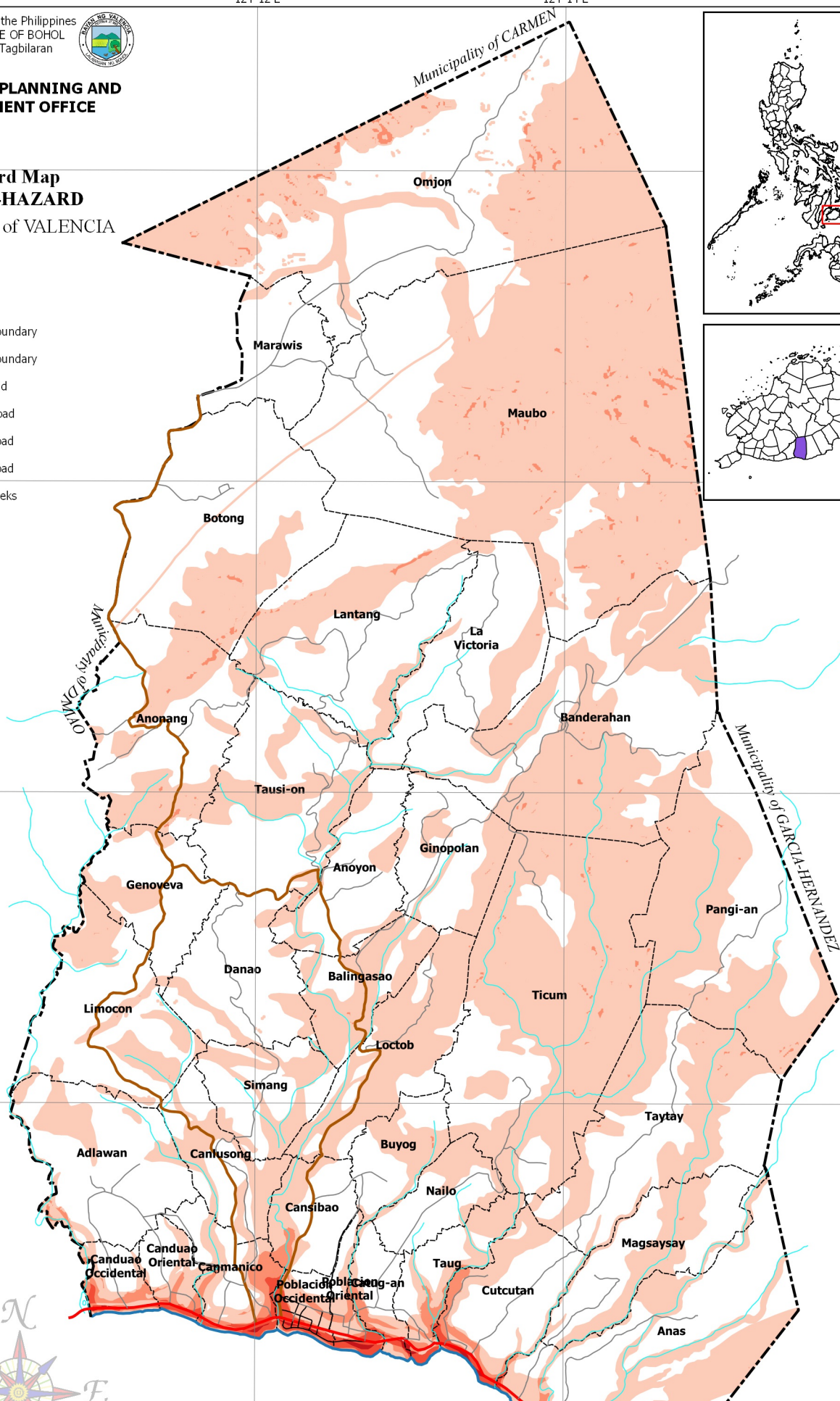
**Multi-Hazard**

- 1 Hazard
- 2 Hazards
- 3 Hazards
- 4 Hazards



9°44'N  
9°42'N  
9°40'N  
9°38'N  
9°36'N

124°10'E  
124°12'E  
124°14'E  
124°16'E



SCALE 1 : 65,000  
Philippines Reference System, 1992 (PRS92)  
Philippine Zone 5

NOTES:

1. Boundaries and coastline derived from parcellary Barangay Section Index Map provided by Valencia MAssO and digitized by MPDC
2. Rivers and Creeks digitized by PPDO GIS Unit from NAMRIA Topographic Map sheet 3820-III, scaled at 1:50,000, edition May 1993
3. Roads based on the Municipal Roads Database acquired through CRID Project and verified using GPS
4. Multi-hazard is a count of number of hazards generated by combining all hazards but only the areas with high susceptibility of each hazard excluding Ground Shaking where all areas of the municipality is highly susceptible
5. This map is for indicative purposes only subject to ground verification

C:\Users\wll\OneDrive\Documents\GIS Projects\CLUP\_Valencia\GIS\Valencia\_CLIP\_2019-2028.aprx | Hazards - Multi-Hazard All Format | N195°6'