

124°10'E

124°12'E

124°14'E

124°16'E



Republic of the Philippines  
PROVINCE OF BOHOL  
City of Tagbilaran



**PROVINCIAL PLANNING AND  
DEVELOPMENT OFFICE**

**Hazard Map  
RAIN-INDUCED  
LANDSLIDE**

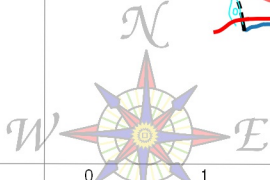
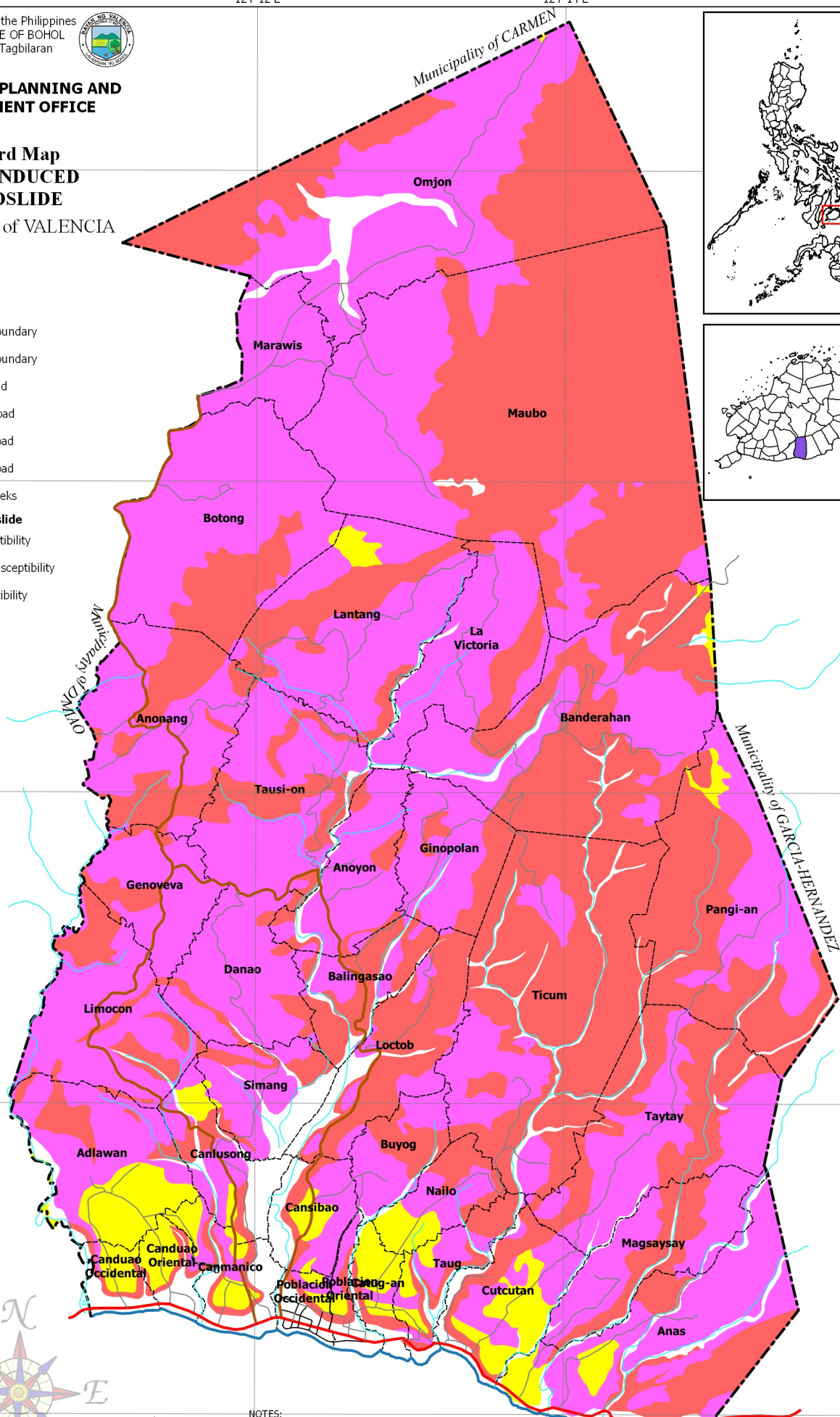
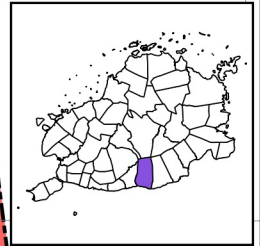
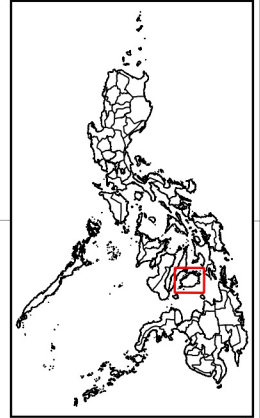
Municipality of VALENCIA

**LEGEND**

- Coastline
- Municipal Boundary
- Barangay Boundary
- National Road
- Provincial Road
- Municipal Road
- Barangay Road
- Rivers & Creeks

**Rain-Induced Landslide**

- High Susceptibility
- Moderate Susceptibility
- Low Susceptibility



SCALE 1 : 65,000  
Philippines Reference System, 1992 (PRS92)  
Philippine Zone 5

**NOTES:**

1. Boundaries and coastline derived from parcellary Barangay Section Index Map provided by Valencia MAssO and digitized by MPDC
2. Rivers and Creeks digitized by PPDO GIS Unit from NAMRIA Topographic Map sheet 3820-III, scaled at 1:50,000, edition May 1993
3. Roads based on the Municipal Roads Database acquired through CRID Project and verified using GPS
4. Rain-Induced Landslide hazard susceptible areas digitized by PPDO-Bohol from Mines and Geosciences Bureau (MGB) Detailed Landslide and Flood Hazard Map sheets scaled at 1:10,000 downloaded from <http://gdis.mgb.gov.ph/mgbgoogle/>
5. This map is for indicative purposes only subject to ground verification

124°10'E

124°12'E

124°14'E

124°16'E

9°44'N  
9°42'N  
9°40'N  
9°38'N  
9°36'N

N 44° 0  
N 42° 0  
N 40° 0  
N 38° 0  
N 36° 0

C:\Users\wiboo\Documents\GIS Projects\CLUP\_Valencia\GIS\Valencia\_CLIP\_2019-2028.apr\Hazard - RL\_A1 Postref N 36° 0