

124°10'E

124°12'E

124°14'E

124°16'E



Republic of the Philippines
PROVINCE OF BOHOL
City of Tagbilaran



**PROVINCIAL PLANNING AND
DEVELOPMENT OFFICE**

**POPULATION
DISTRIBUTION MAP
Census Year: 1990**

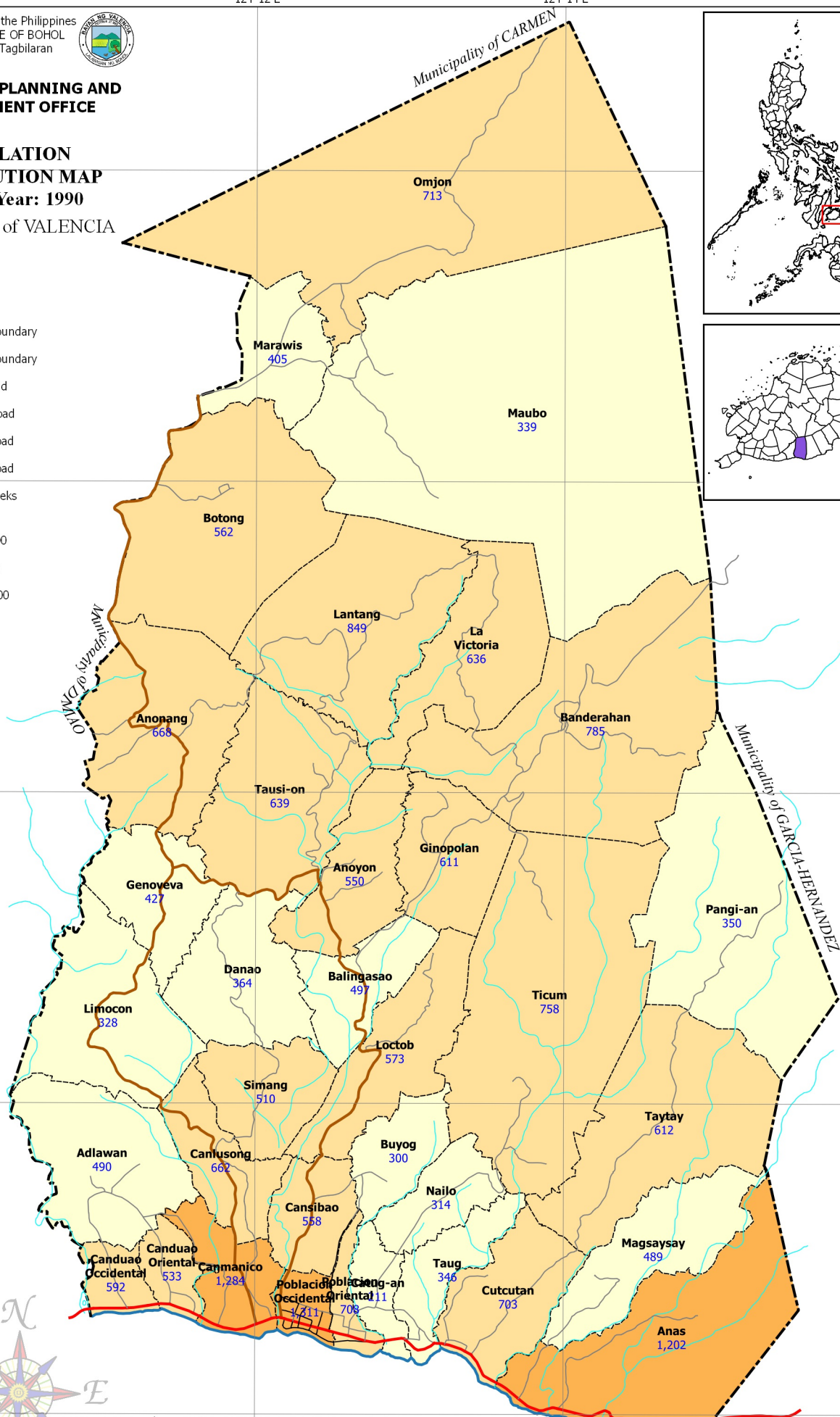
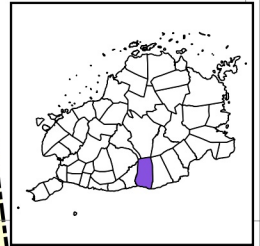
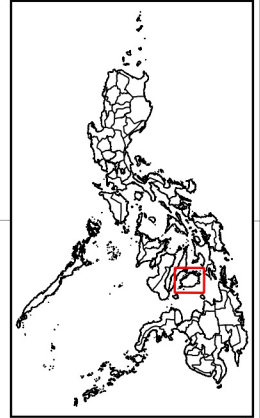
Municipality of VALENCIA

LEGEND

- Coastline
- Municipal Boundary
- Barangay Boundary
- National Road
- Provincial Road
- Municipal Road
- Barangay Road
- Rivers & Creeks

Population 1990

- Less than 500
- 500 to 1,000
- 1,000 to 1,500



9°44'N

9°42'N

9°40'N

9°38'N

9°36'N

124°16'E

124°14'E

124°12'E

124°10'E

124°08'E

124°06'E

124°04'E

124°02'E

124°00'E

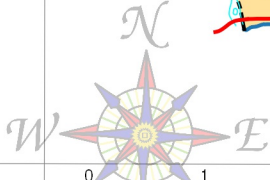
123°58'E

123°56'E

123°54'E

123°52'E

123°50'E



SCALE 1 : 65,000
Philippines Reference System, 1992 (PRS92)
Philippine Zone 5

- NOTES:
- Boundaries and coastline derived from parcellary Barangay Section Index Map provided by Valencia MAssO and digitized by MPDC
 - Rivers and Creeks digitized by PPDO GIS Unit from NAMRIA Topographic Map sheet 3820-III, scaled at 1:50,000, edition May 1993
 - Roads based on the Municipal Roads Database acquired through CRID Project and verified using GPS
 - Population Data from Philippine Statistics Authority (PSA)
 - This map is for indicative purposes only subject to ground verification

C:\Users\w\OneDrive\Documents\GIS Projects\CLUP_Vale\GIS_Vale\Map\CLUP_2019-2028.aprx | Stored at: Population 1990 At Print | N:\95-06