

124°10'E

124°12'E

124°14'E

124°16'E



Republic of the Philippines
PROVINCE OF BOHOL
City of Tagbilaran



**PROVINCIAL PLANNING AND
DEVELOPMENT OFFICE**

**PROJECTED POPULATION
DISTRIBUTION MAP**
Projection Year: 2019

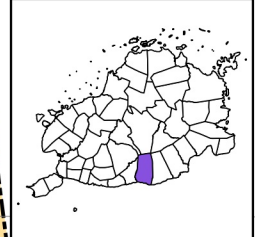
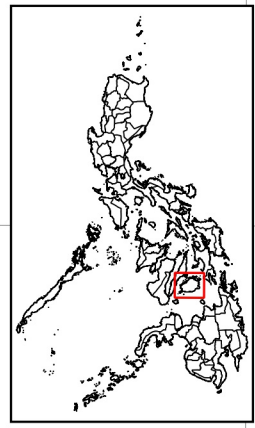
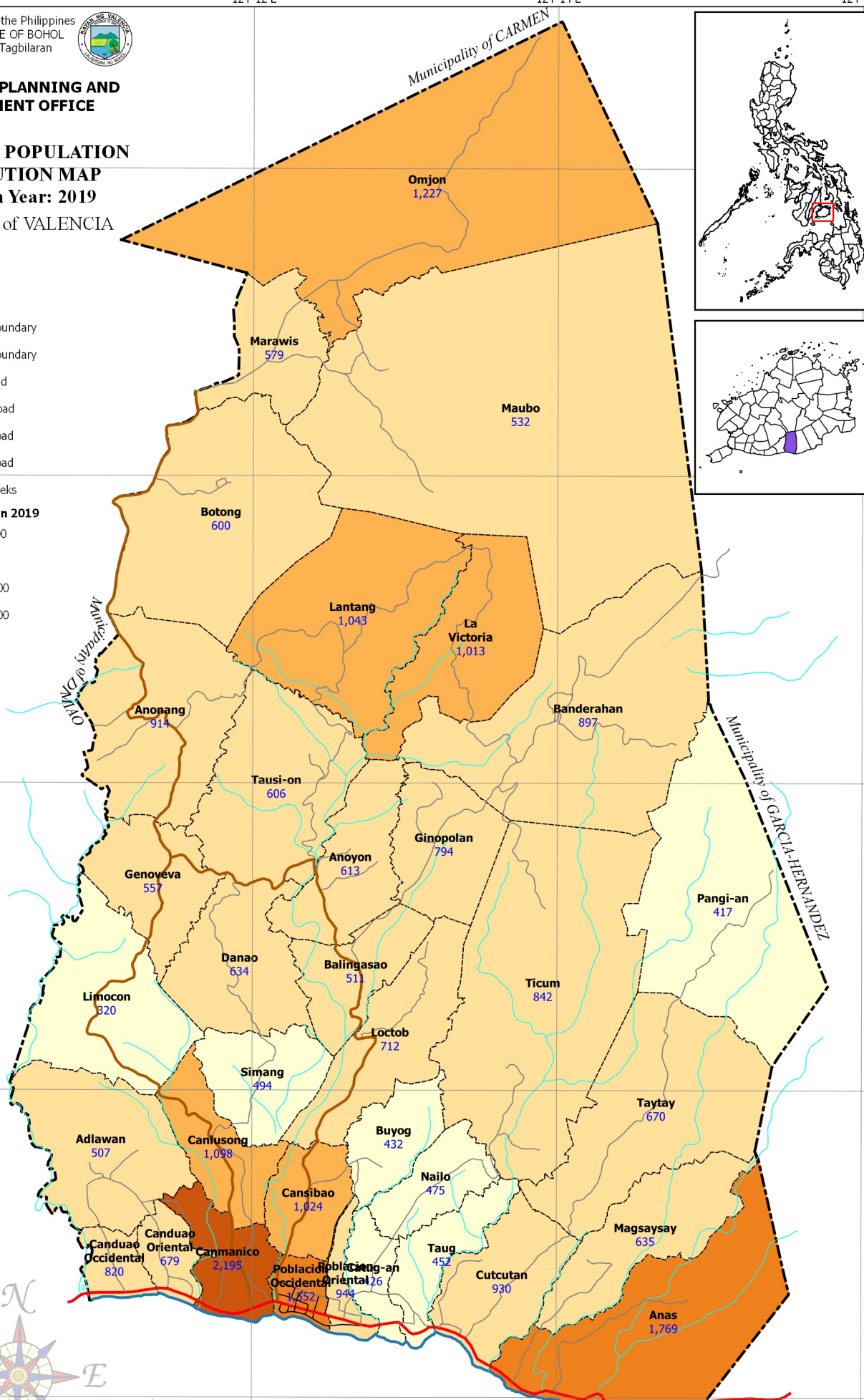
Municipality of VALENCIA

LEGEND

- Coastline
- Municipal Boundary
- Barangay Boundary
- National Road
- Provincial Road
- Municipal Road
- Barangay Road
- Rivers & Creeks

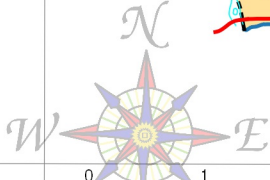
Projected Population 2019

- Less than 500
- 500 to 1,000
- 1,000 to 1,500
- 1,500 to 2,000
- Over 2,000



9°44'N
9°42'N
9°40'N
9°38'N
9°36'N

N 11° 6'
N 12° 2'
N 13° 0'
N 13° 8'
N 13° 6'



SCALE 1 : 65,000
Philippines Reference System, 1992 (PRS92)
Philippine Zone 5

- NOTES:
1. Boundaries and coastline derived from parcellary Barangay Section Index Map provided by Valencia MAssO and digitized by MPDC
 2. Rivers and Creeks digitized by PPDO GIS Unit from NAMRIA Topographic Map sheet 3820-III, scaled at 1:50,000, edition May 1993
 3. Roads based on the Municipal Roads Database acquired through CRID Project and verified using GPS
 4. Projected Population computed based on data from Philippine Statistics Authority (PSA)
 5. This map is for indicative purposes only subject to ground verification

124°10'E

124°12'E

124°14'E

124°16'E

C:\Users\wifos\Documents\GIS Projects\CLUP_Vale\Arch\GIS\Valencia_CLUP_2019-2028.aprx | Stable | at - Population 2019 Projected | All Print | N 13° 6'