

124°10'E

124°12'E

124°14'E

124°16'E



Republic of the Philippines
PROVINCE OF BOHOL
City of Tagbilaran



**PROVINCIAL PLANNING AND
DEVELOPMENT OFFICE**

**POPULATION ANNUAL
GROWTH RATE**

Census Years: 1990-1995

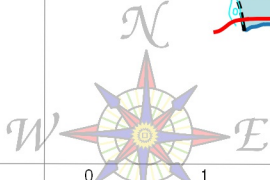
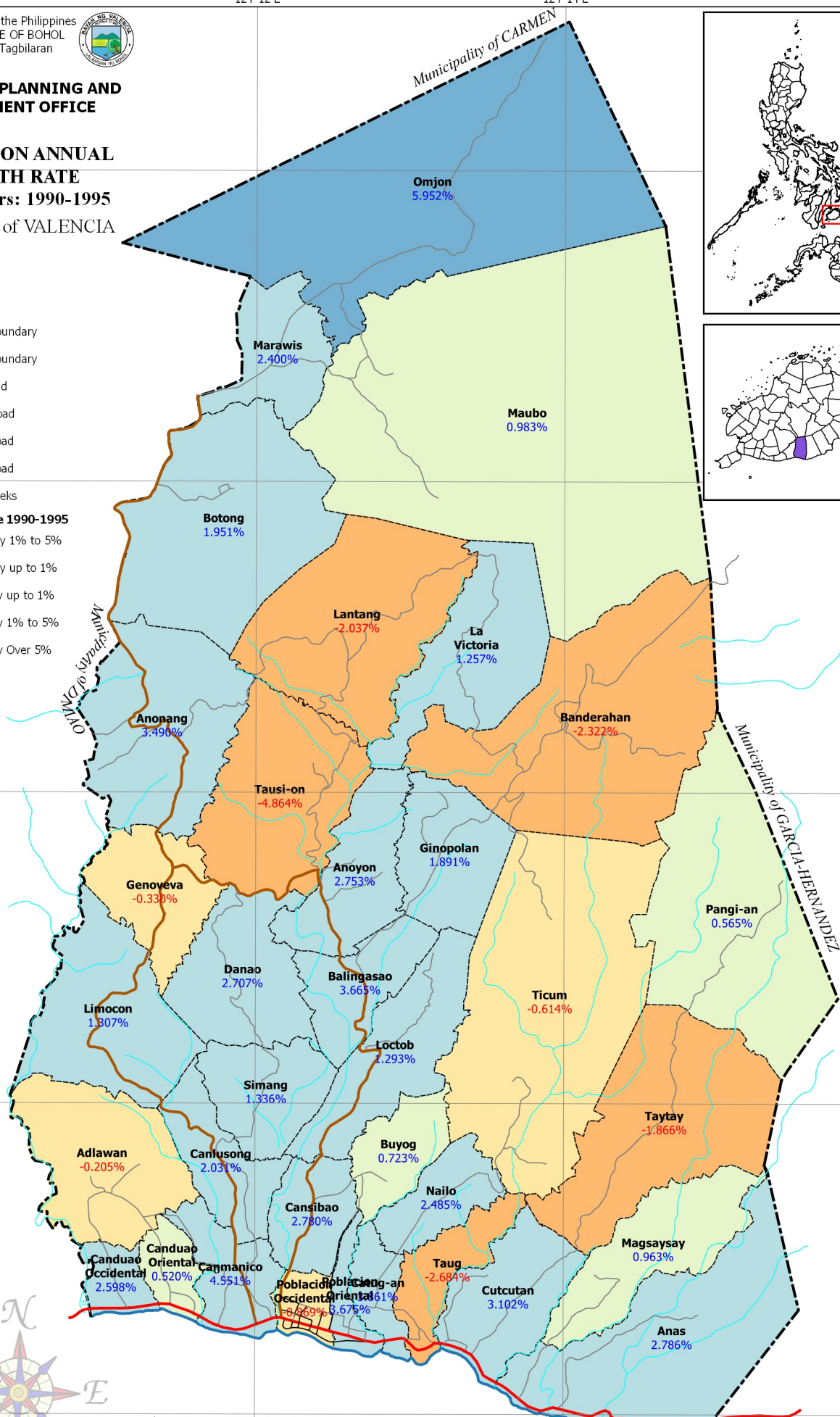
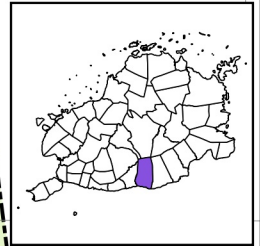
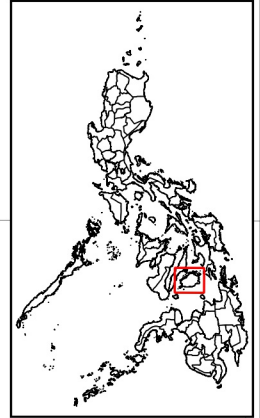
Municipality of VALENCIA

LEGEND

- Coastline
- Municipal Boundary
- Barangay Boundary
- National Road
- Provincial Road
- Municipal Road
- Barangay Road
- Rivers & Creeks

Annual Growth Rate 1990-1995

- Decreased by 1% to 5%
- Decreased by up to 1%
- Increased by up to 1%
- Increased by 1% to 5%
- Increased by Over 5%



SCALE 1 : 65,000
Philippines Reference System, 1992 (PRS92)
Philippine Zone 5

- NOTES:
- Boundaries and coastline derived from parcellary Barangay Section Index Map provided by Valencia MAssO and digitized by MPDC
 - Rivers and Creeks digitized by PPDO GIS Unit from NAMRIA Topographic Map sheet 3820-III, scaled at 1:50,000, edition May 1993
 - Roads based on the Municipal Roads Database acquired through CRID Project and verified using GPS
 - Population Annual Growth Rate computed based on data from Philippine Statistics Authority (PSA)
 - This map is for indicative purposes only subject to ground verification

124°10'E

124°12'E

124°14'E

124°16'E

9°44'N
9°42'N
9°40'N
9°38'N
9°36'N

N44°6
N42°N
N40°N
N38°6
N36°6

C:\Users\w\Documents\GIS Projects\CLUP_Valencia\GIS_Valencia_CLIP_2019-2028.aprx | Stored at: Population Annual Growth Rate: 1990-1995_A1 Postfile