

124°10'E

124°12'E

124°14'E

124°16'E



Republic of the Philippines
PROVINCE OF BOHOL
City of Tagbilaran



**PROVINCIAL PLANNING AND
DEVELOPMENT OFFICE**

**POPULATION ANNUAL
GROWTH RATE**

Census Years: 2007-2010

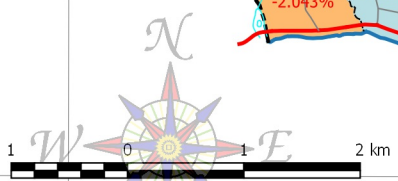
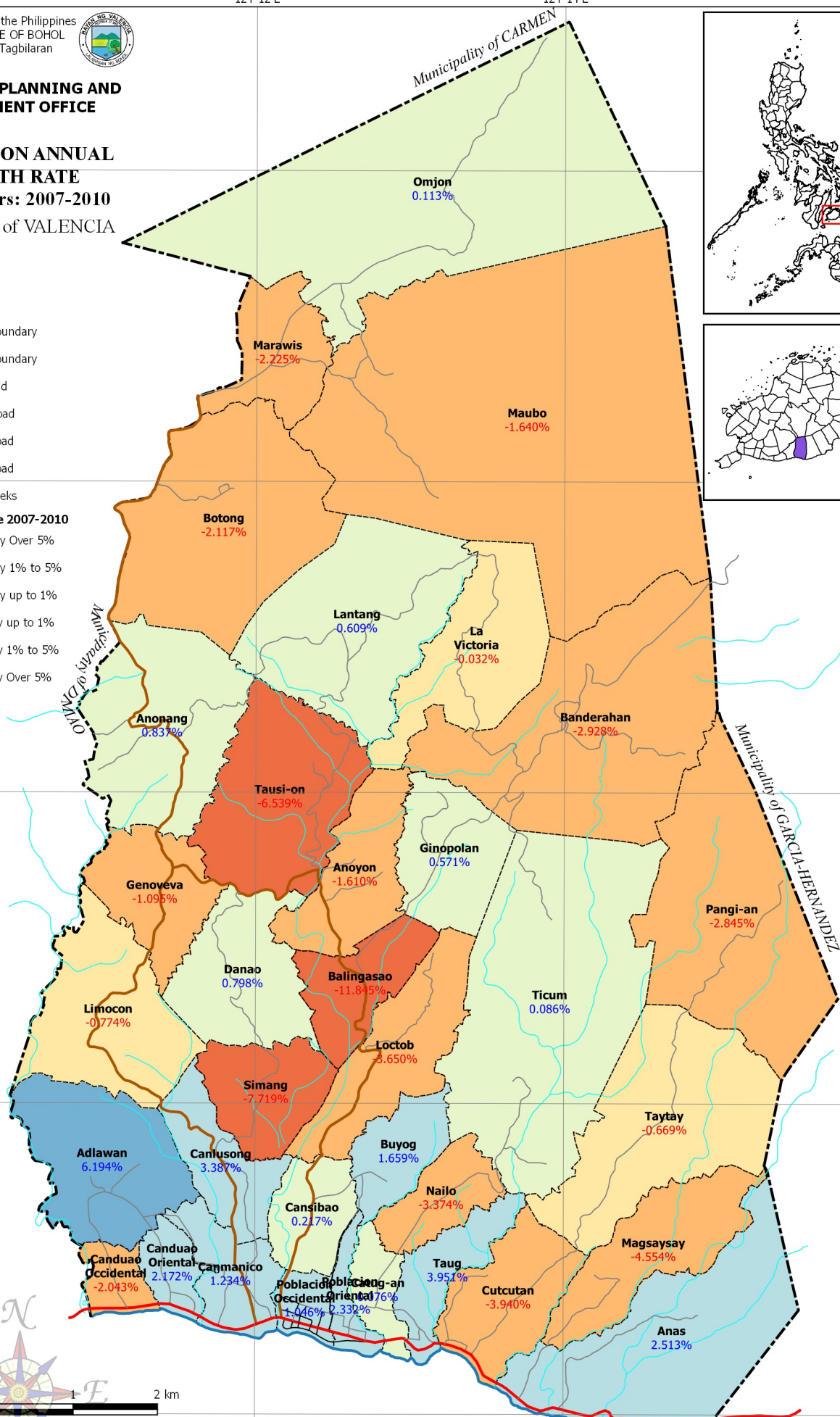
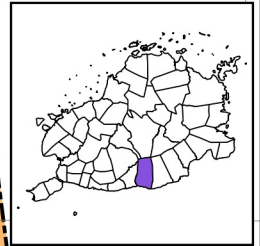
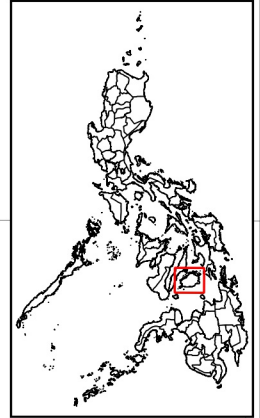
Municipality of VALENCIA

LEGEND

- Coastline
- Municipal Boundary
- Barangay Boundary
- National Road
- Provincial Road
- Municipal Road
- Barangay Road
- Rivers & Creeks

Annual Growth Rate 2007-2010

- Decreased by Over 5%
- Decreased by 1% to 5%
- Decreased by up to 1%
- Increased by up to 1%
- Increased by 1% to 5%
- Increased by Over 5%



SCALE 1 : 65,000
 Philippines Reference System, 1992 (PRS92)
 Philippine Zone 5

NOTES:
 1. Boundaries and coastline derived from parcellary Barangay Section Index Map provided by Valencia MAssO and digitized by MPDC
 2. Rivers and Creeks digitized by PPDO GIS Unit from NAMRIA Topographic Map sheet 3820-III, scaled at 1:50,000, edition May 1993
 3. Roads based on the Municipal Roads Database acquired through CRID Project and verified using GPS
 4. Population Annual Growth Rate computed based on data from Philippine Statistics Authority (PSA)
 5. This map is for indicative purposes only subject to ground verification

124°10'E

124°12'E

124°14'E

124°16'E

9°44'N
9°42'N
9°40'N
9°38'N
9°36'N

N44°6
N42°N
N40°N
N38°6
N36°6

C:\Users\w\OneDrive\Documents\GIS Projects\CLUP_Vale\GIS_Vale\Map_Series\Population Annual Growth Rate_2007-2010_A1 Post.pdf