

124°10'E

124°12'E

124°14'E

124°16'E



Republic of the Philippines
PROVINCE OF BOHOL
City of Tagbilaran



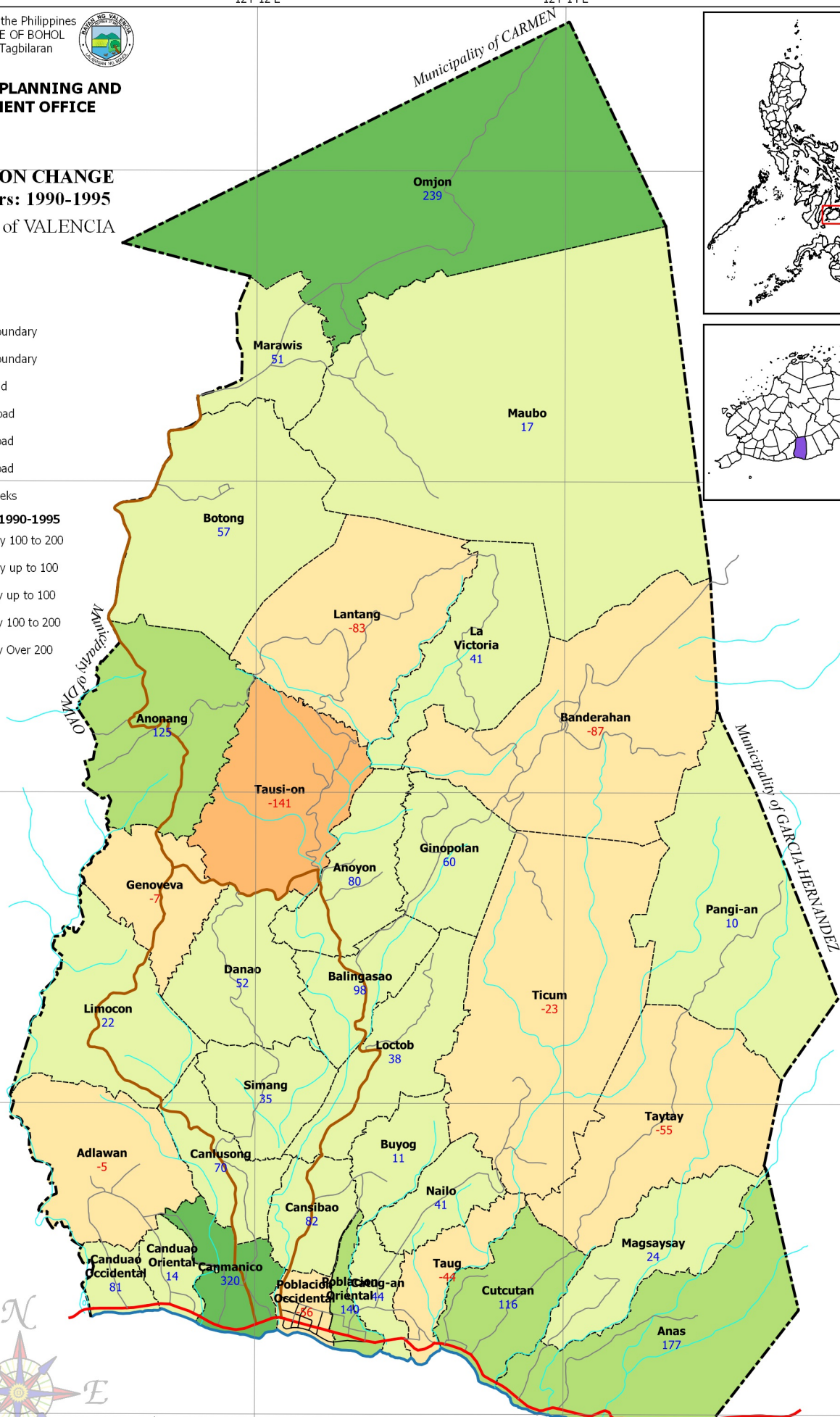
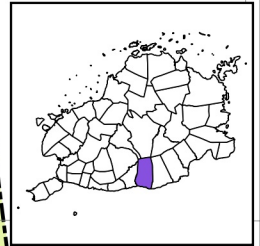
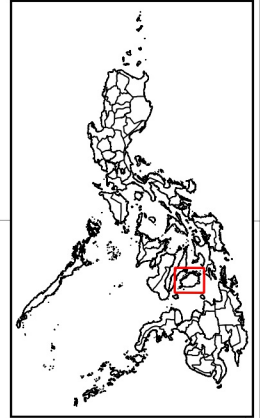
**PROVINCIAL PLANNING AND
DEVELOPMENT OFFICE**

**POPULATION CHANGE
Census Years: 1990-1995**
Municipality of VALENCIA

LEGEND

- Coastline
- Municipal Boundary
- Barangay Boundary
- National Road
- Provincial Road
- Municipal Road
- Barangay Road
- Rivers & Creeks

- Population Change 1990-1995**
- Decreased by 100 to 200
 - Decreased by up to 100
 - Increased by up to 100
 - Increased by 100 to 200
 - Increased by Over 200



9°44'N

9°42'N

9°40'N

9°38'N

9°36'N

9°34'N

9°32'N

9°30'N

9°28'N

9°26'N

9°24'N

9°22'N

9°20'N

9°18'N

124°16'E

124°14'E

124°12'E

124°10'E

124°08'E

124°06'E

124°04'E

124°02'E

124°00'E

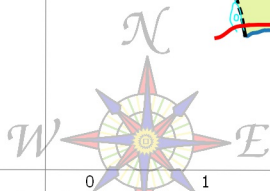
123°58'E

123°56'E

123°54'E

123°52'E

123°50'E



1 0 1 2 km

SCALE 1 : 65,000
Philippines Reference System, 1992 (PRS92)
Philippine Zone 5

NOTES:

1. Boundaries and coastline derived from parcellary Barangay Section Index Map provided by Valencia MAssO and digitized by MPDC
2. Rivers and Creeks digitized by PPDO GIS Unit from NAMRIA Topographic Map sheet 3820-III, scaled at 1:50,000, edition May 1993
3. Roads based on the Municipal Roads Database acquired through CRID Project and verified using GPS
4. Population Change computed based on data from Philippine Statistics Authority (PSA)
5. This map is for indicative purposes only subject to ground verification

124°10'E

124°12'E

124°14'E

124°16'E

C:\Users\wafos\Documents\GIS Projects\CLUP_Valechic\GIS_Valechic_CLUP_2019-2028.aprx | Stable | Population Change 1990-1995 | M Frontal | N 95°e6