

124°10'E

124°12'E

124°14'E

124°16'E



Republic of the Philippines  
PROVINCE OF BOHOL  
City of Tagbilaran



**PROVINCIAL PLANNING AND  
DEVELOPMENT OFFICE**

**POPULATION DENSITY  
MAP**

**Census Year: 2000**

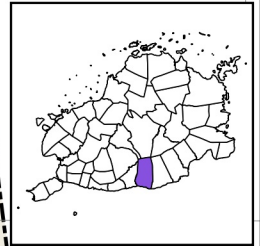
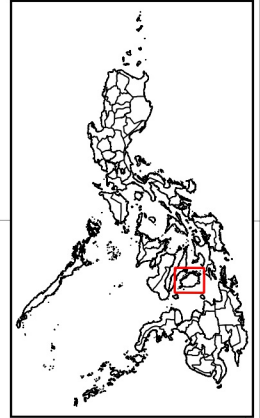
Municipality of VALENCIA

**LEGEND**

- Coastline
- Municipal Boundary
- Barangay Boundary
- National Road
- Provincial Road
- Municipal Road
- Barangay Road
- Rivers & Creeks

**Population Density 2000**

- Less than 100 per sq. km.
- 100 to 500 per sq. km.
- 500 to 1,000 per sq. km.
- 1,000 to 2,000 per sq. km.
- 2,000 to 3,000 per sq. km.



9°44'N

9°42'N

9°40'N

9°38'N

9°36'N

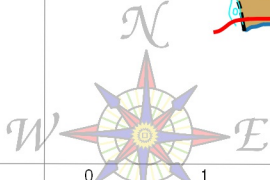
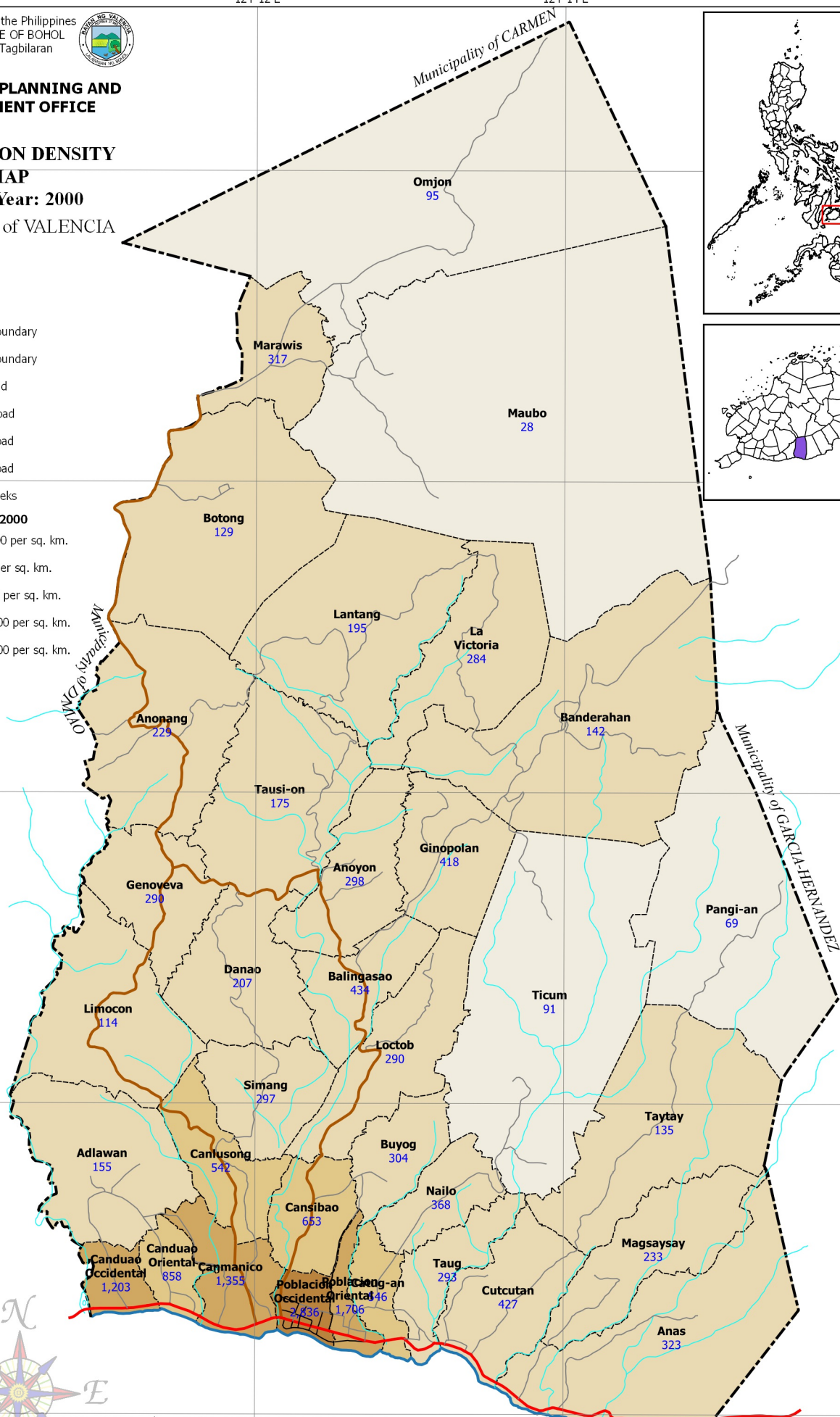
124°16'E

124°14'E

124°12'E

124°10'E

124°08'E



SCALE 1 : 65,000  
Philippines Reference System, 1992 (PRS92)  
Philippine Zone 5

- NOTES:
- Boundaries and coastline derived from parcellary Barangay Section Index Map provided by Valencia MAssO and digitized by MPDC
  - Rivers and Creeks digitized by PPDO GIS Unit from NAMRIA Topographic Map sheet 3820-III, scaled at 1:50,000, edition May 1993
  - Roads based on the Municipal Roads Database acquired through CRID Project and verified using GPS
  - Population Density computed based on data from Philippine Statistics Authority (PSA) using areas generated from the map
  - This map is for indicative purposes only subject to ground verification

C:\Users\w\OneDrive\Documents\GIS Projects\CLUP\_Vale\Arch\GIS\Valencia\_CLUP\_2019-2028.aprx | Statefile.aprx | Population Density 2000 AT Format | N:\95-e6

124°10'E

124°12'E

124°14'E

124°16'E