

124°10'E

124°12'E

124°14'E

124°16'E



Republic of the Philippines
PROVINCE OF BOHOL
City of Tagbilaran



**PROVINCIAL PLANNING AND
DEVELOPMENT OFFICE**

**POPULATION DENSITY
MAP**

Census Year: 2015

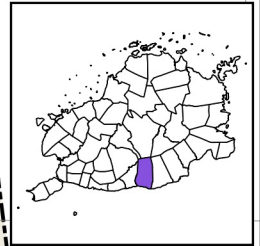
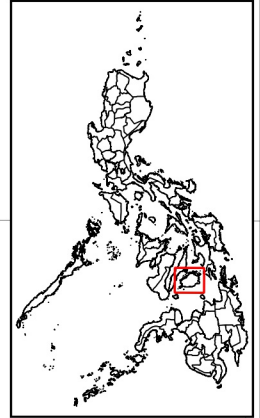
Municipality of VALENCIA

LEGEND

- Coastline
- Municipal Boundary
- Barangay Boundary
- National Road
- Provincial Road
- Municipal Road
- Barangay Road
- Rivers & Creeks

Population Density 2015

- Less than 100 per sq. km.
- 100 to 500 per sq. km.
- 500 to 1,000 per sq. km.
- 1,000 to 2,000 per sq. km.
- 2,000 to 3,000 per sq. km.
- Over 3,000 per sq. km.



9°44'N

9°42'N

9°40'N

9°38'N

9°36'N

9°34'N

9°32'N

9°30'N

9°28'N

9°26'N

9°24'N

9°22'N

9°20'N

124°16'E

124°14'E

124°12'E

124°10'E

124°08'E

124°06'E

124°04'E

124°02'E

124°00'E

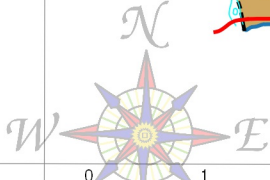
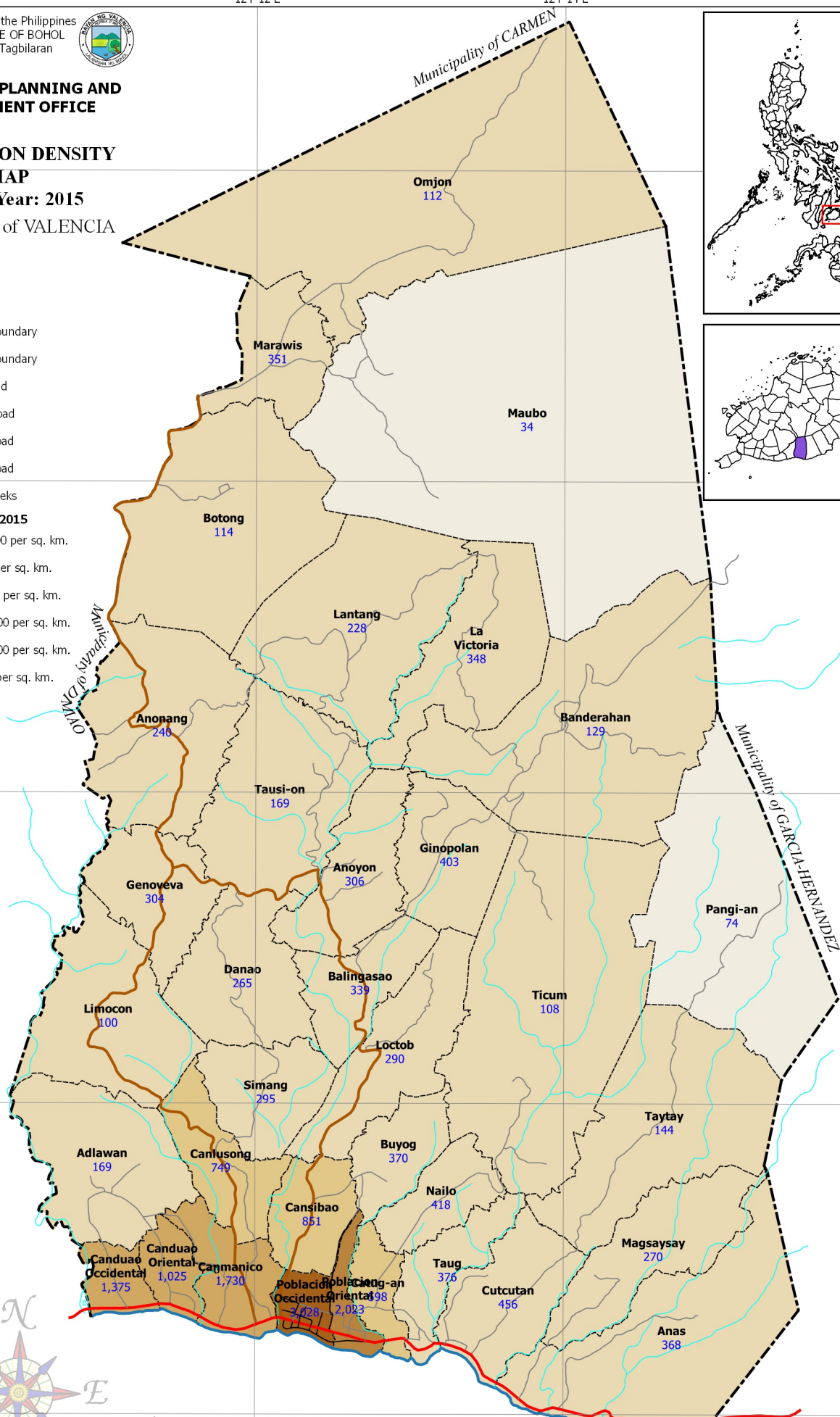
123°58'E

123°56'E

123°54'E

123°52'E

123°50'E



SCALE 1 : 65,000
 Philippines Reference System, 1992 (PRS92)
 Philippine Zone 5

- NOTES:
- Boundaries and coastline derived from parcellary Barangay Section Index Map provided by Valencia MAssO and digitized by MPDC
 - Rivers and Creeks digitized by PPDO GIS Unit from NAMRIA Topographic Map sheet 3820-III, scaled at 1:50,000, edition May 1993
 - Roads based on the Municipal Roads Database acquired through CRID Project and verified using GPS
 - Population Density computed based on data from Philippine Statistics Authority (PSA) using areas generated from the map
 - This map is for indicative purposes only subject to ground verification

C:\Users\w\OneDrive\Documents\GIS Projects\CLUP_Vale\GIS_Vale\Map\CLUP_2015-2028\Map\15012015\Population Density 2015 At District