

124°10'E

124°12'E

124°14'E

124°16'E



Republic of the Philippines  
PROVINCE OF BOHOL  
City of Tagbilaran



**PROVINCIAL PLANNING AND  
DEVELOPMENT OFFICE**

**PROJECTED POPULATION  
DENSITY MAP**

**Projection Year: 2019**

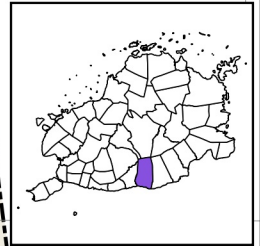
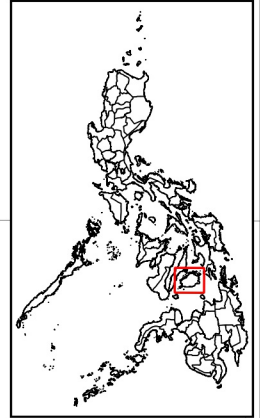
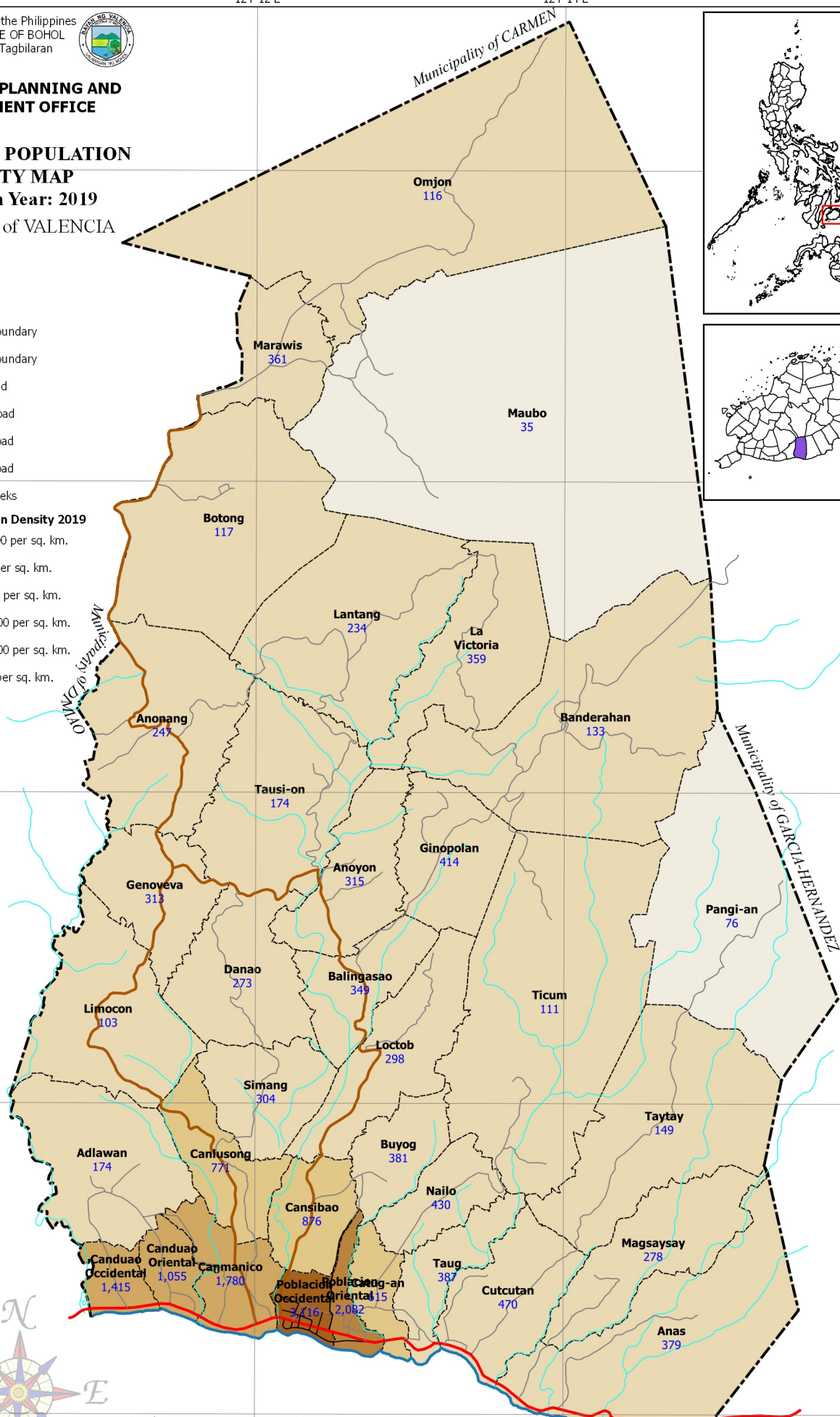
Municipality of VALENCIA

**LEGEND**

- Coastline
- Municipal Boundary
- Barangay Boundary
- National Road
- Provincial Road
- Municipal Road
- Barangay Road
- Rivers & Creeks

**Projected Population Density 2019**

- Less than 100 per sq. km.
- 100 to 500 per sq. km.
- 500 to 1,000 per sq. km.
- 1,000 to 2,000 per sq. km.
- 2,000 to 3,000 per sq. km.
- Over 3,000 per sq. km.



9°44'N

9°42'N

9°40'N

9°38'N

9°36'N

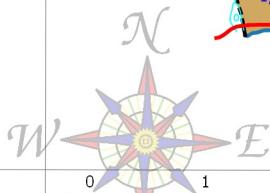
N 44° 0'

N 42° 0'

N 40° 0'

N 38° 0'

N 36° 0'



1 0 1 2 km

SCALE 1 : 65,000  
Philippines Reference System, 1992 (PRS92)  
Philippine Zone 5

**NOTES:**

1. Boundaries and coastline derived from parcellary Barangay Section Index Map provided by Valencia MAssO and digitized by MPDC
2. Rivers and Creeks digitized by PPDG GIS Unit from NAMRIA Topographic Map sheet 3820-III, scaled at 1:50,000, edition May 1993
3. Roads based on the Municipal Roads Database acquired through CRID Project and verified using GPS
4. Projected Population Density computed based on data from Philippine Statistics Authority (PSA) using areas generated from the map
5. This map is for indicative purposes only subject to ground verification

124°10'E

124°12'E

124°14'E

124°16'E

C:\Users\w\OneDrive\Documents\GIS Projects\CLUP\_Vale\GIS\_Vale\Map\CLUP\_2019-2028.aprx | Statefile.aprx | Population Density 2019 Projected AT Portrait | N 36° 0'