

124°10'E

124°12'E

124°14'E

124°16'E



Republic of the Philippines  
PROVINCE OF BOHOL  
City of Tagbilaran



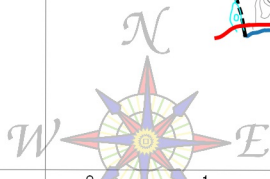
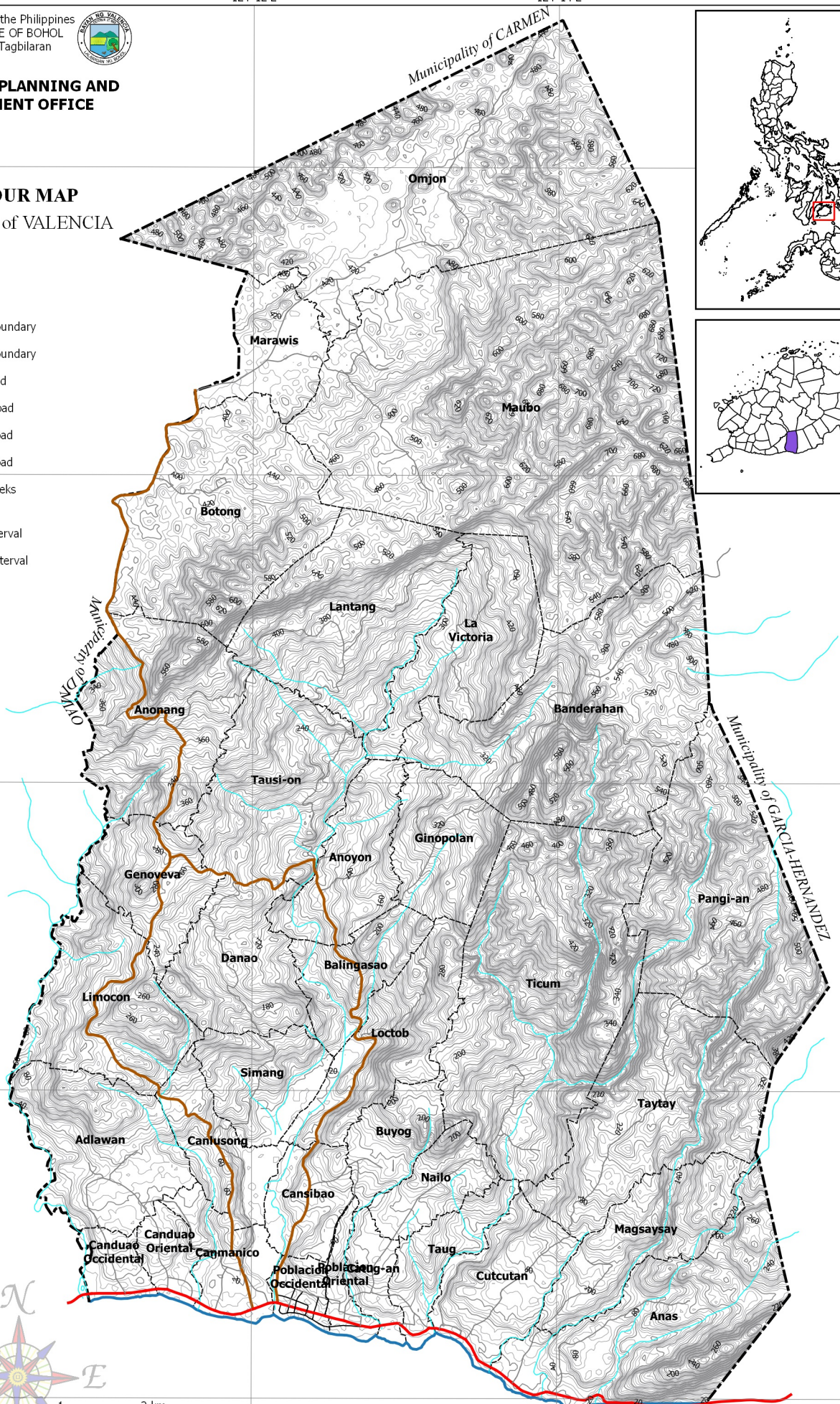
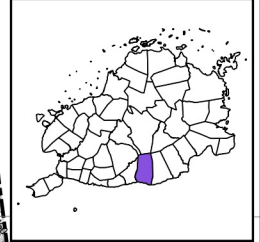
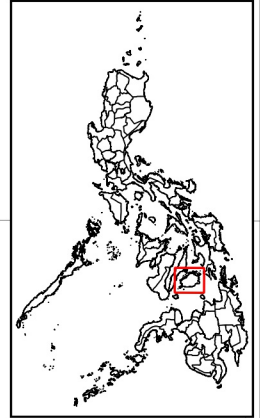
**PROVINCIAL PLANNING AND  
DEVELOPMENT OFFICE**

**CONTOUR MAP**

Municipality of VALENCIA

**LEGEND**

- Coastline
  - Municipal Boundary
  - Barangay Boundary
  - National Road
  - Provincial Road
  - Municipal Road
  - Barangay Road
  - Rivers & Creeks
- Contour Interval**
- 5 meters interval
  - 20 meters interval



SCALE 1 : 65,000  
Philippines Reference System, 1992 (PRS92)  
Philippine Zone 5

**NOTES:**

1. Boundaries and coastline derived from parcellary Barangay Section Index Map provided by Valencia MAssO and digitized by MPDC
2. Rivers and Creeks digitized by PPDO GIS Unit from NAMRIA Topographic Map sheet 3820-III, scaled at 1:50,000, edition May 1993
3. Roads based on the Municipal Roads Database acquired through CRID Project and verified using GPS
4. Contours generated from Shuttle Radar Topography Mission (SRTM) v3 1 arc-second Global Digital Elevation Model (GDEM)
5. This map is for indicative purposes only subject to ground verification

9°44'N

9°42'N

9°40'N

9°38'N

9°36'N

9°34'N

9°32'N

9°30'N

9°28'N

9°26'N

9°24'N

9°22'N

9°20'N

124°10'E

124°12'E

124°14'E

124°16'E

C:\Users\w\OneDrive\Documents\GIS\Projects\CLIP\Valencia\GIS\Valencia\_CLIP\_2019-2028.aprx | Theme: NBS - Contour Map At Portrait | NBS - Contour Map At Portrait