

124°10'E

124°12'E

124°14'E

124°16'E



Republic of the Philippines
PROVINCE OF BOHOL
City of Tagbilaran



**PROVINCIAL PLANNING AND
DEVELOPMENT OFFICE**

ELEVATION MAP

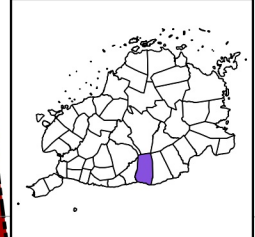
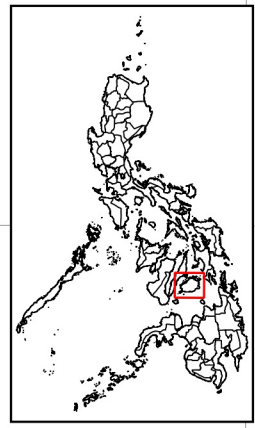
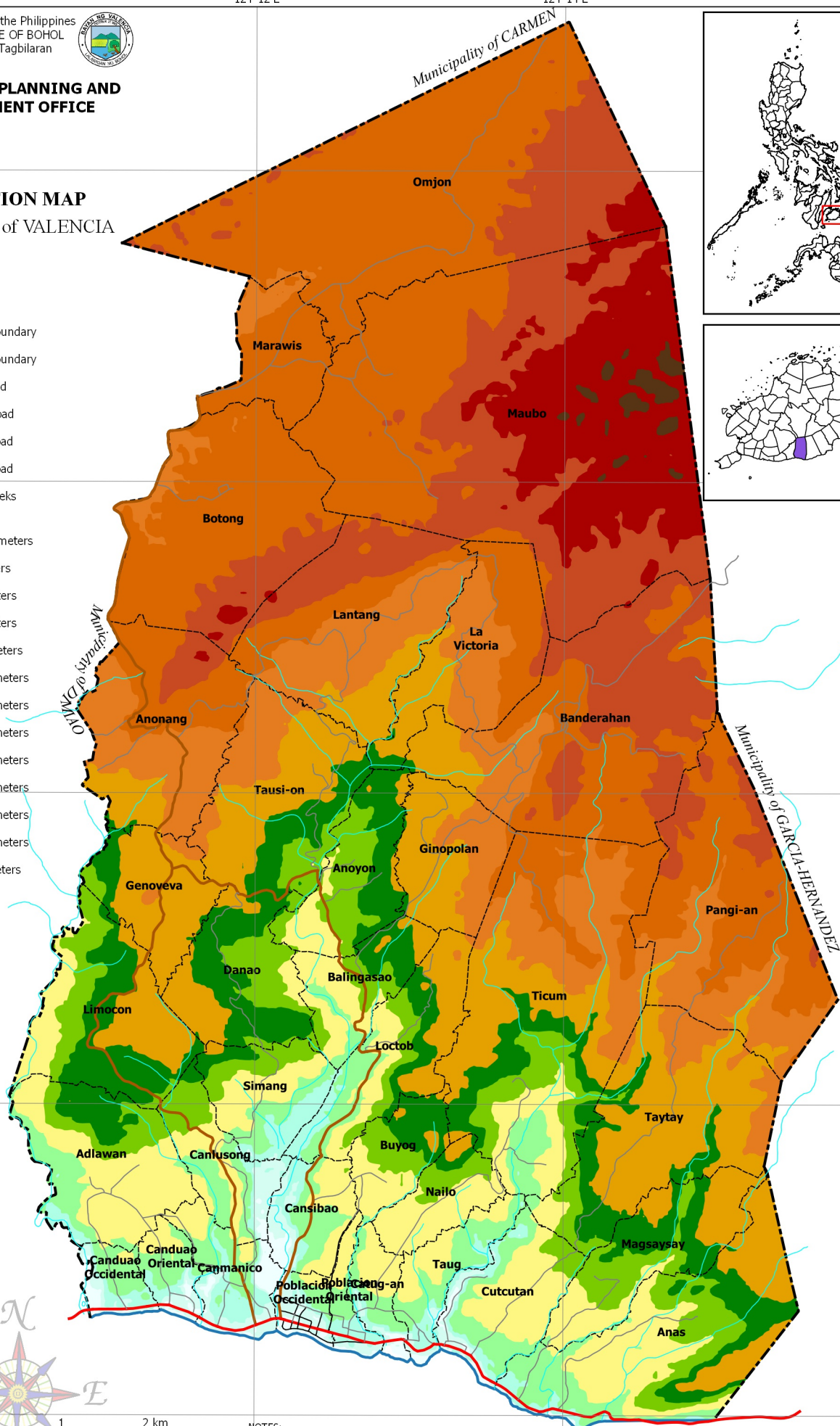
Municipality of VALENCIA

LEGEND

- Coastline
- Municipal Boundary
- Barangay Boundary
- National Road
- Provincial Road
- Municipal Road
- Barangay Road
- Rivers & Creeks

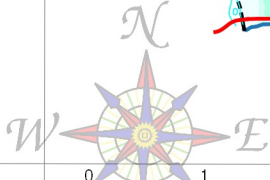
Elevation Range

- Less than 5 meters
- 5 to 10 meters
- 10 to 20 meters
- 20 to 50 meters
- 50 to 100 meters
- 100 to 150 meters
- 150 to 200 meters
- 200 to 300 meters
- 300 to 400 meters
- 400 to 500 meters
- 500 to 600 meters
- 600 to 700 meters
- Over 700 meters



9°44'N
9°42'N
9°40'N
9°38'N
9°36'N

124°10'E
124°12'E
124°14'E
124°16'E



SCALE 1 : 65,000
Philippines Reference System, 1992 (PRS92)
Philippine Zone 5

- NOTES:
1. Boundaries and coastline derived from parcellary Barangay Section Index Map provided by Valencia MAssO and digitized by MPDC
 2. Rivers and Creeks digitized by PPDO GIS Unit from NAMRIA Topographic Map sheet 3820-III, scaled at 1:50,000, edition May 1993
 3. Roads based on the Municipal Roads Database acquired through CRID Project and verified using GPS
 4. Elevation Range generated from Shuttle Radar Topography Mission (SRTM) v3 1 arc-second Global Digital Elevation Model (GDEM)
 5. This map is for indicative purposes only subject to ground verification

C:\Users\w\Documents\GIS Projects\CLUP_Valech\GIS_Valech\CLUP_2019-2028\aps | Themes\ES - Elevation Map_A1 Port\at N195-e6