

124°10'E

124°12'E

124°14'E

124°16'E



Republic of the Philippines
PROVINCE OF BOHOL
City of Tagbilaran



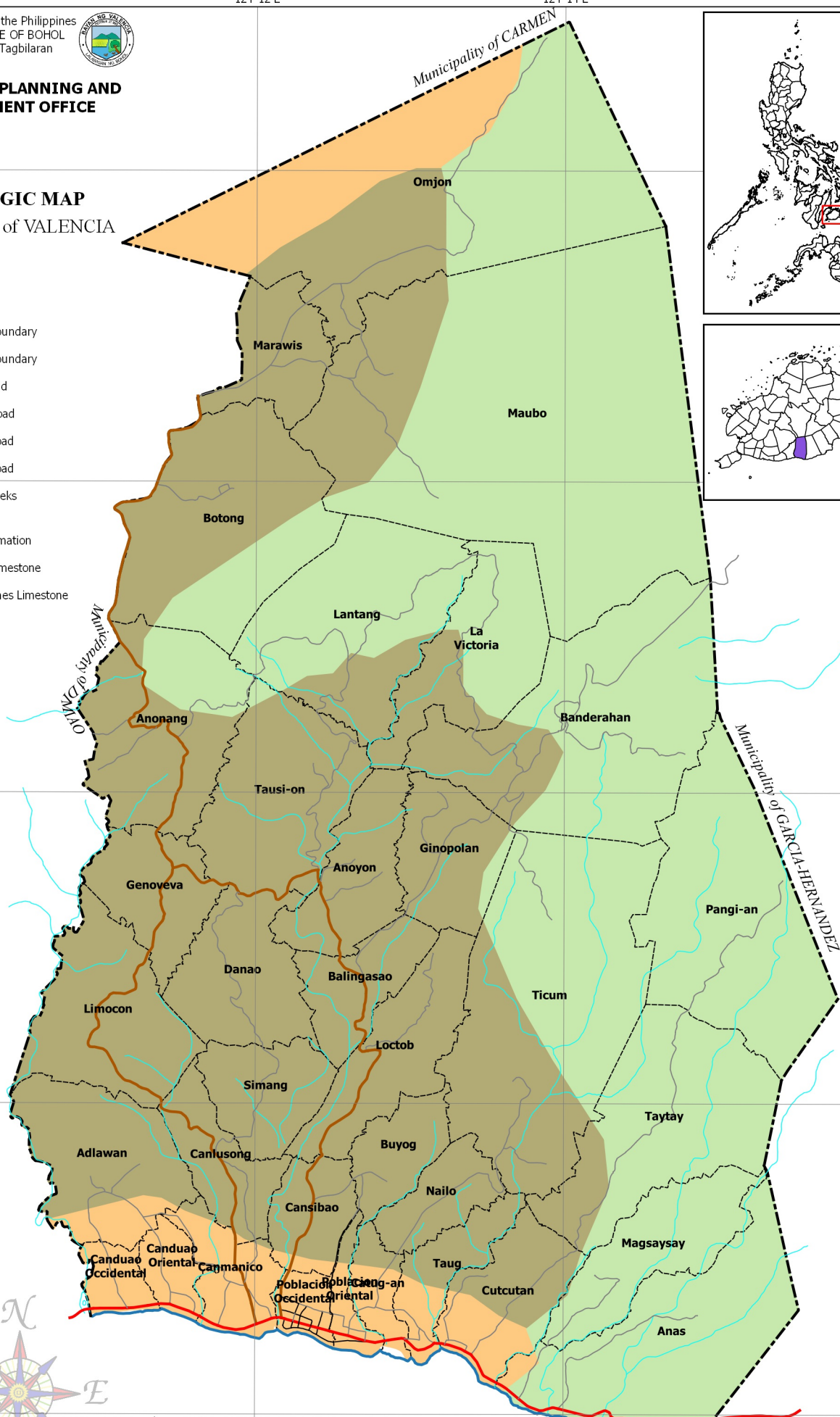
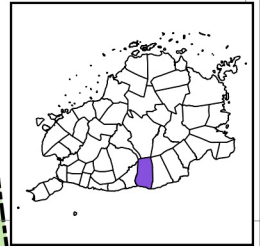
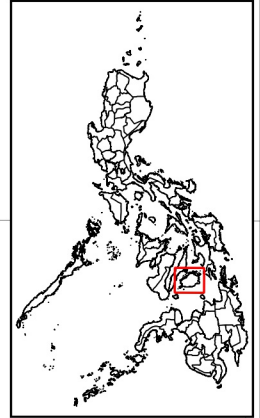
**PROVINCIAL PLANNING AND
DEVELOPMENT OFFICE**

GEOLOGIC MAP

Municipality of VALENCIA

LEGEND

- Coastline
 - Municipal Boundary
 - Barangay Boundary
 - National Road
 - Provincial Road
 - Municipal Road
 - Barangay Road
 - Rivers & Creeks
- Geologic Formation**
- Carmen Formation
 - Maribojoc Limestone
 - Sierra Bullones Limestone



9°44'N

9°42'N

9°40'N

9°38'N

9°36'N

9°34'N

9°32'N

9°30'N

9°28'N

9°26'N

9°24'N

9°22'N

9°20'N

124°16'E

124°14'E

124°12'E

124°10'E

124°08'E

124°06'E

124°04'E

124°02'E

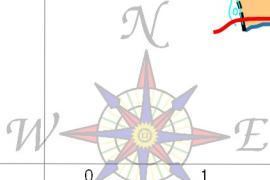
124°00'E

123°58'E

123°56'E

123°54'E

123°52'E



SCALE 1 : 65,000
Philippines Reference System, 1992 (PRS92)
Philippine Zone 5

- NOTES:
1. Boundaries and coastline derived from parcellary Barangay Section Index Map provided by Valencia MAssO and digitized by MPDC
 2. Rivers and Creeks digitized by PPDO GIS Unit from NAMRIA Topographic Map sheet 3820-III, scaled at 1:50,000, edition May 1993
 3. Roads based on the Municipal Roads Database acquired through CRID Project and verified using GPS
 4. Geologic Formation digitized by PPDO-Bohol GIS Unit from BSWM Geologic Map sheets scaled 1:50,000
 5. This map is for indicative purposes only subject to ground verification

C:\Users\w\Documents\GIS Projects\CLUP_Valech\GIS_Valech\CLUP_2019-2028\gfs\Thematics - Geologic Map At District