

124°10'E

124°12'E

124°14'E

124°16'E



Republic of the Philippines
PROVINCE OF BOHOL
City of Tagbilaran



**PROVINCIAL PLANNING AND
DEVELOPMENT OFFICE**

LAND CLASSIFICATION MAP

Municipality of VALENCIA

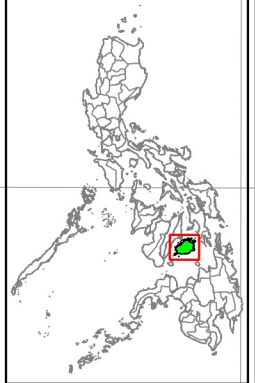
LEGEND

- Coastline
- Municipal Boundary
- Barangay Boundary
- National Road
- Provincial Road
- Municipal Road
- Barangay Road
- Rivers & Creeks

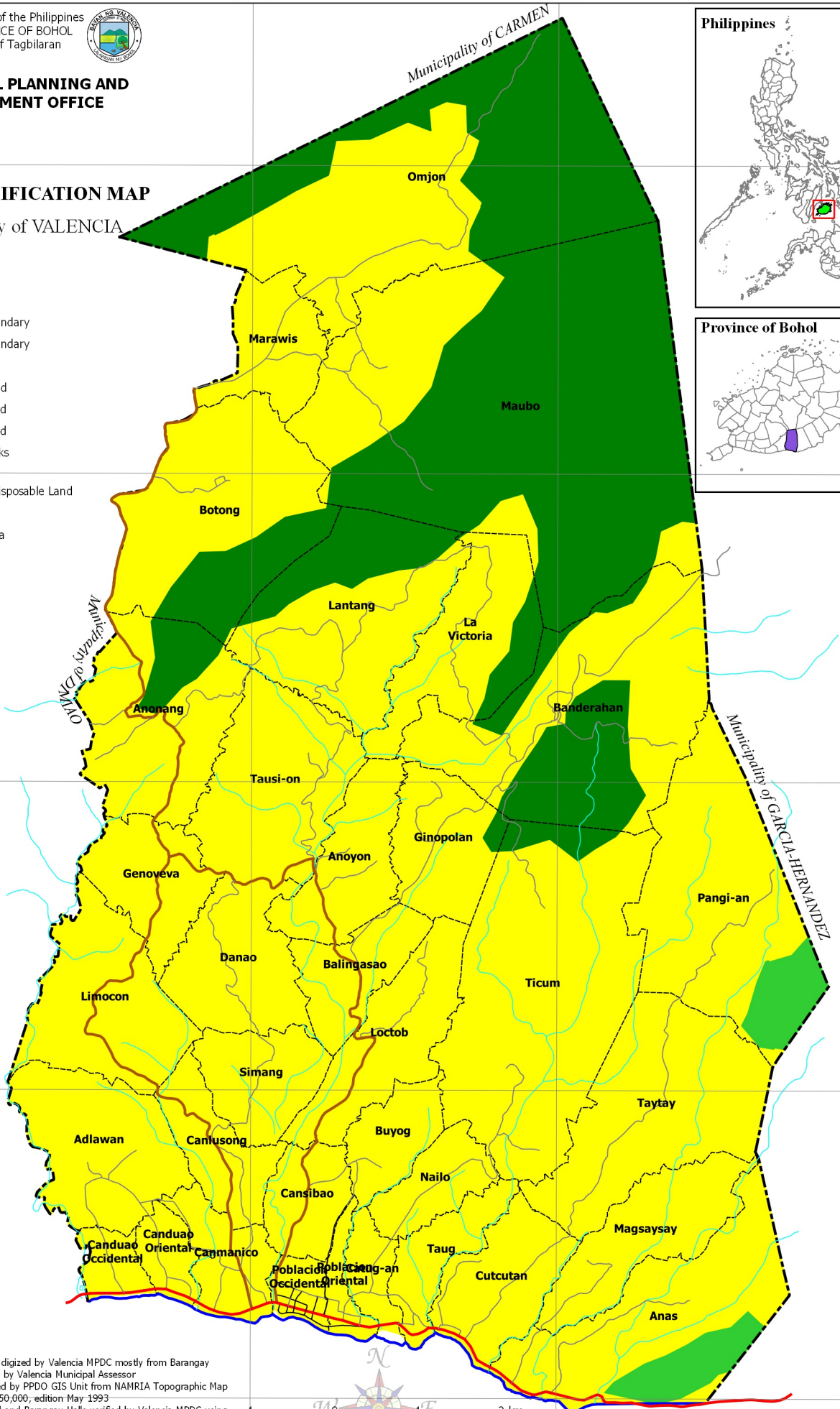
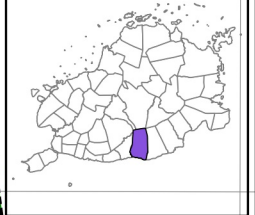
Land Classification

- Alienable & Disposable Land
- Forestland
- Protected Area
- No Data

Philippines

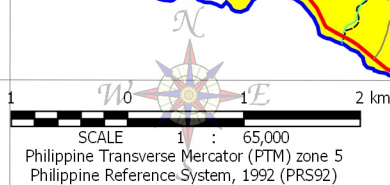


Province of Bohol



NOTES:

1. Boundaries and coastline digitized by Valencia MPDC mostly from Barangay Section Index Map provided by Valencia Municipal Assessor
2. Rivers and Creeks digitized by PPDO GIS Unit from NAMRIA Topographic Map sheet 3820-III, scaled at 1:50,000, edition May 1993
3. Location of Municipal Hall and Barangay Halls verified by Valencia MPDC using Global Positioning System (GPS)
4. Roads based on the Municipal Roads Database acquired through CRID Project and verified using GPS
5. Land Classification based on data provided by NAMRIA, 2016
6. This map is for indicative purposes only subject to ground verification



124°10'E

124°12'E

124°14'E

124°16'E

9°44'N

9°42'N

9°40'N

9°38'N

9°36'N

N 44° 6'

N 42° 0'

N 40° 0'

N 38° 0'

N 36° 0'

C:\Users\w\OneDrive\Documents\GIS Projects\CLUP_Valencia\GIS_Valencia\CLUP_2019-2028\aps\Thematics_Land Classification Map At Portal