

124°10'E

124°12'E

124°14'E

124°16'E



Republic of the Philippines  
PROVINCE OF BOHOL  
City of Tagbilaran



**PROVINCIAL PLANNING AND  
DEVELOPMENT OFFICE**

**Network of Protected Areas  
for Agriculture and Agro-  
Industrial Development  
(NPAAAD)**

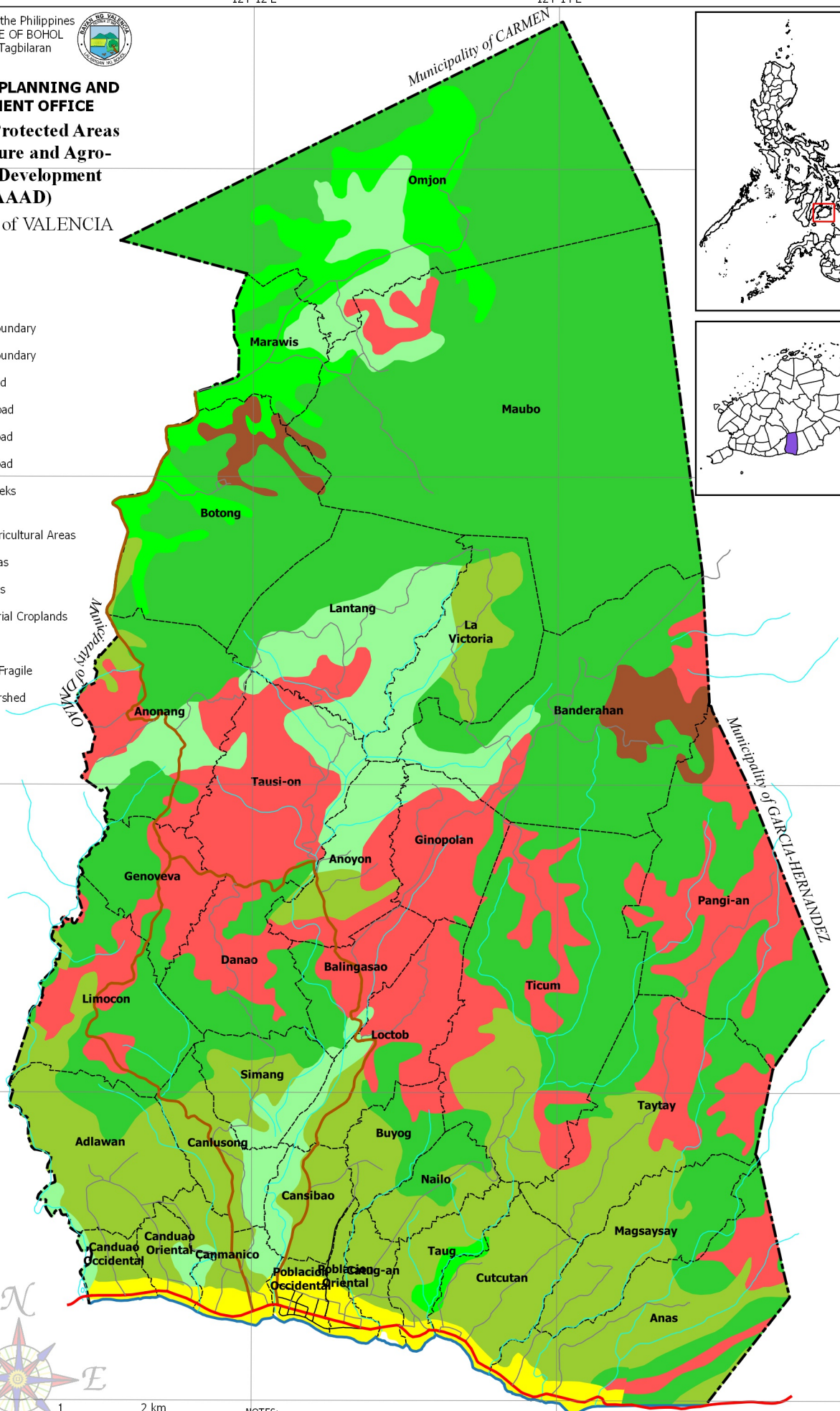
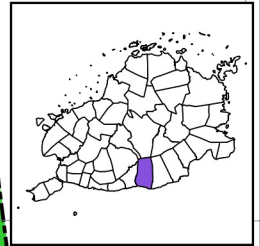
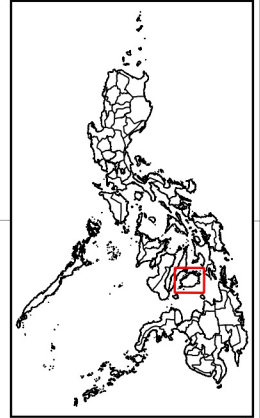
Municipality of VALENCIA

**LEGEND**

- Coastline
- Municipal Boundary
- Barangay Boundary
- National Road
- Provincial Road
- Municipal Road
- Barangay Road
- Rivers & Creeks

**NPAAAD**

- Irrigated Agricultural Areas
- Built-up Areas
- Alluvial Plains
- Agro-Industrial Croplands
- Highlands
- Ecologically Fragile
- Forest/Watershed



9°44'N

9°42'N

9°40'N

9°38'N

9°36'N

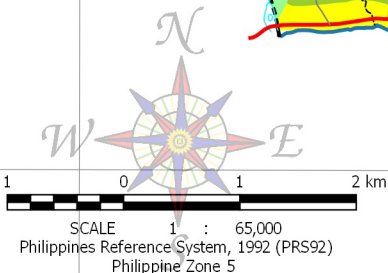
124°16'E

124°14'E

124°12'E

124°10'E

124°08'E



**NOTES:**

1. Boundaries and coastline derived from parcellary Barangay Section Index Map provided by Valencia MAssO and digitized by MPDC
2. Rivers and Creeks digitized by PPDO GIS Unit from NAMRIA Topographic Map sheet 3820-III, scaled at 1:50,000, edition May 1993
3. Roads based on the Municipal Roads Database acquired through CRID Project and verified using GPS
4. Network of Protected Areas for Agriculture and Agro-Industrial Development digitized by PPDO GIS Unit from NPAAAD Map from BSWM
5. This map is for indicative purposes only subject to ground verification

124°10'E

124°12'E

124°14'E

124°16'E

C:\Users\w\Documents\GIS\Projects\CLUP\_Valencia\GIS\Valencia\_CLIP\_2019-2028.aprx | Themes\1 - NPAAAD\_A1\_Portal | N:8C:e6