

124°10'E

124°12'E

124°14'E

124°16'E



Republic of the Philippines
PROVINCE OF BOHOL
City of Tagbilaran



PROVINCIAL PLANNING AND DEVELOPMENT OFFICE

SLOPE MAP

Municipality of VALENCIA

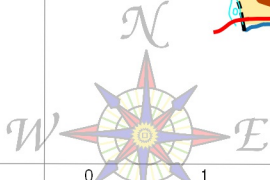
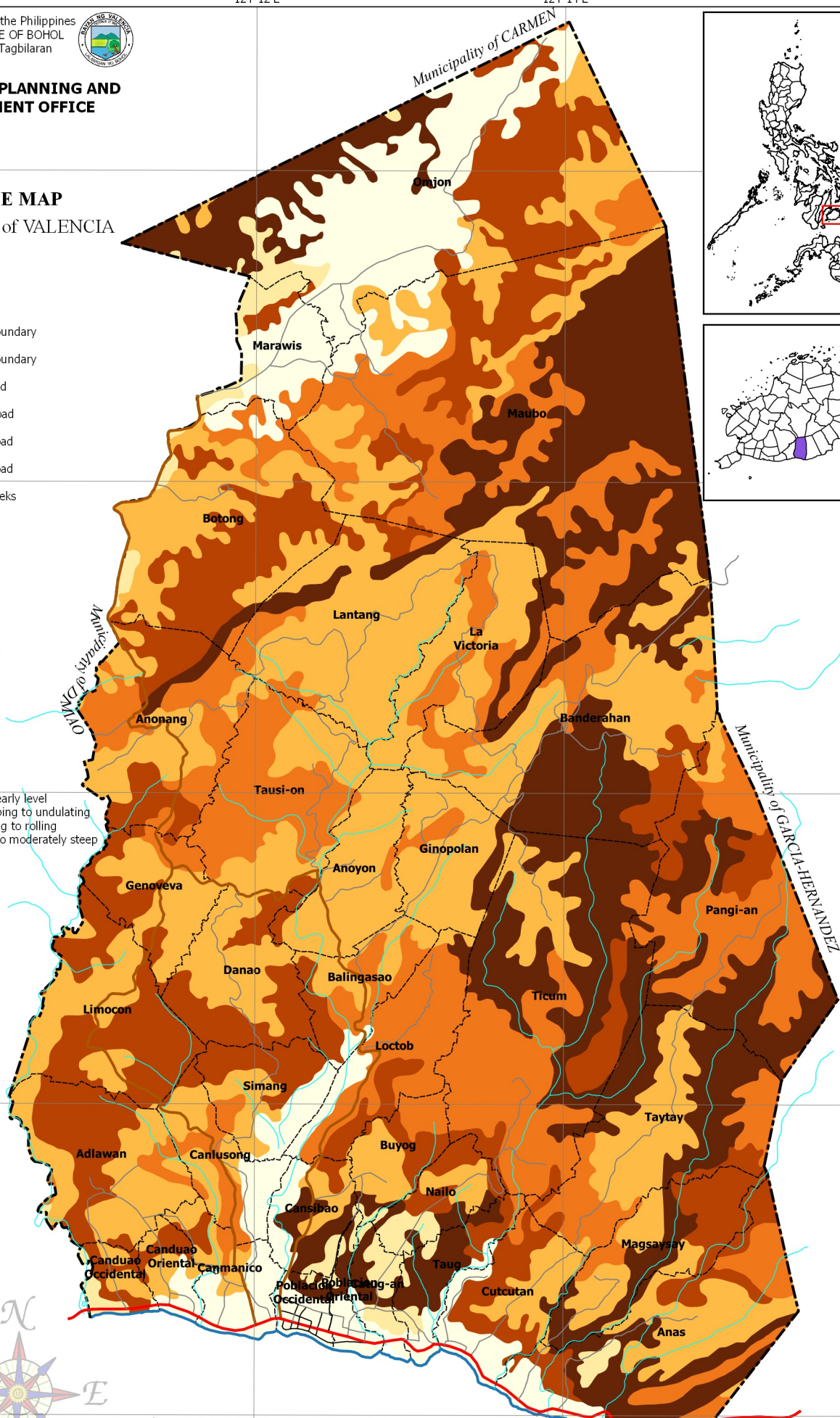
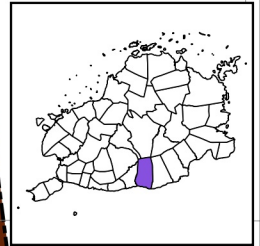
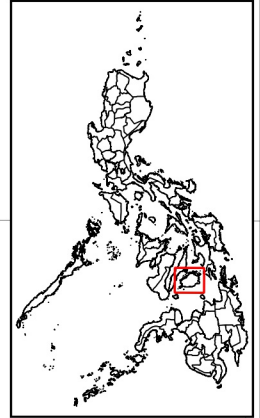
LEGEND

- Coastline
- Municipal Boundary
- Barangay Boundary
- National Road
- Provincial Road
- Municipal Road
- Barangay Road
- Rivers & Creeks

Slope Classification

- 0% to 3%
- 3% to 8%
- 8% to 18%
- 18% to 30%
- 30% to 50%
- over 50%

- 0% to 3% - Level to nearly level
- 3% to 8% - Gently sloping to undulating
- 8% to 18% - Undulating to rolling
- 18% to 30% - Rolling to moderately steep
- 30% to 50% - Steep
- Over 50% - Very steep



SCALE 1 : 65,000
Philippines Reference System, 1992 (PRS92)
Philippine Zone 5

- NOTES:
1. Boundaries and coastline derived from parcellary Barangay Section Index Map provided by Valencia MAssO and digitized by MPDC
 2. Rivers and Creeks digitized by PPDO GIS Unit from NAMRIA Topographic Map sheet 3820-III, scaled at 1:50,000, edition May 1993
 3. Roads based on the Municipal Roads Database acquired through CRID Project and verified using GPS
 4. Slope Classification digitized by PPDO-Bohol GIS Unit from BSWM Slope Map sheets scaled at 1:50,000
 5. This map is for indicative purposes only subject to ground verification

124°10'E

124°12'E

124°14'E

124°16'E

9°44'N

9°42'N

9°40'N

9°38'N

9°36'N

N 44° 0'

N 42° 0'

N 40° 0'

N 38° 0'

N 36° 0'

C:\Users\w\Documents\GIS Projects\CLUP_Valech\GIS_Valech\CLUP_2019-2028\aps\Thematic\5 - Slope Map_A1\Portrait N:8C:e6