

124°10'E

124°12'E

124°14'E

124°16'E



Republic of the Philippines
PROVINCE OF BOHOL
City of Tagbilaran



PROVINCIAL PLANNING AND DEVELOPMENT OFFICE

WATERSHEDS MAP

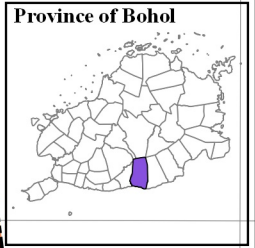
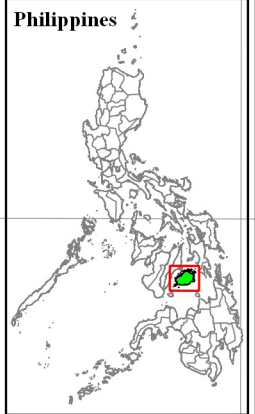
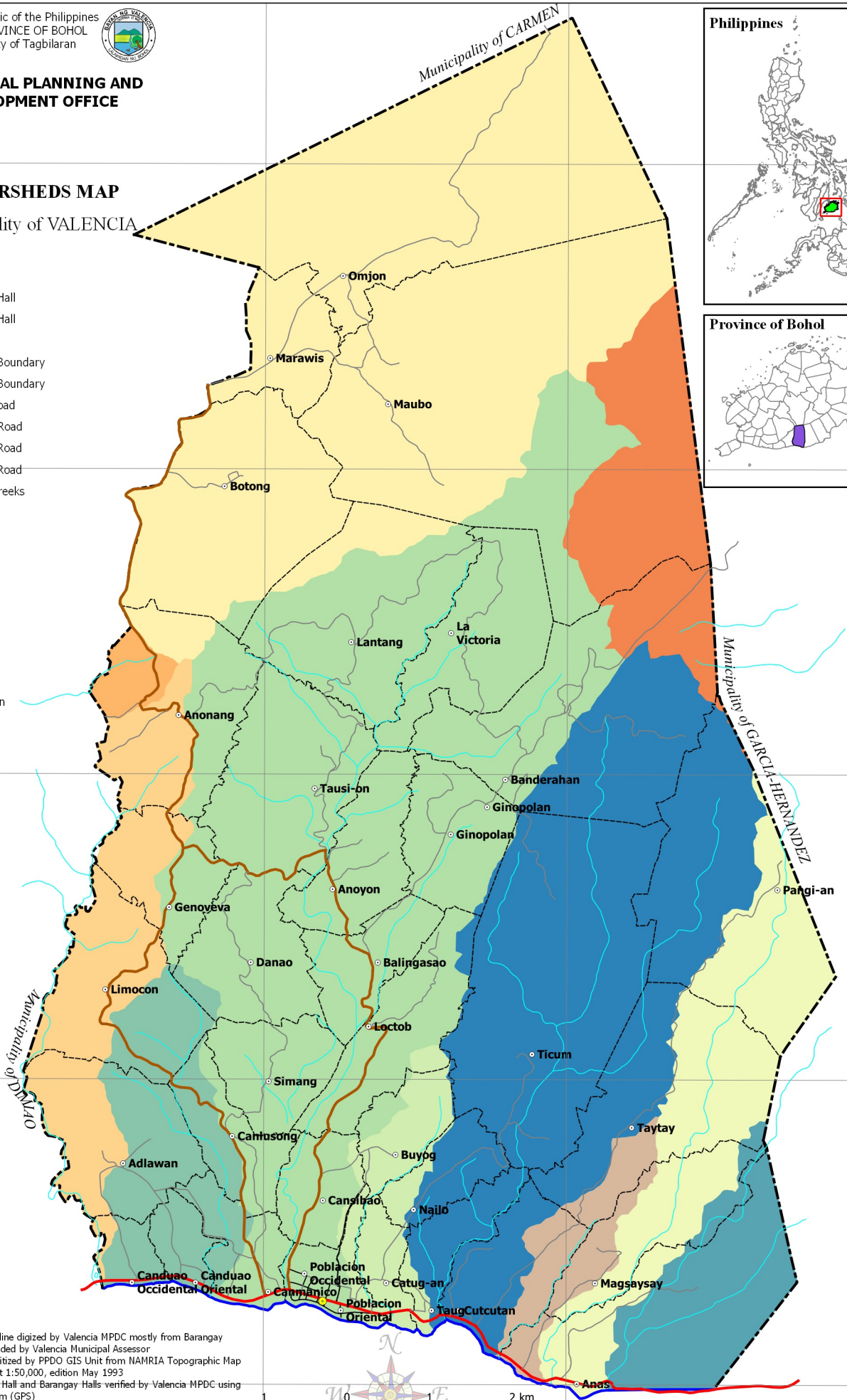
Municipality of VALENCIA

LEGEND

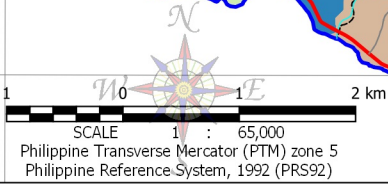
- Municipal Hall
- Barangay Hall
- Coastline
- Municipal Boundary
- Barangay Boundary
- National Road
- Provincial Road
- Municipal Road
- Barangay Road
- Rivers & Creeks

Watersheds

- Bandera
- Guiwanon
- Hagsam
- Kabanoy
- Karandoy
- Loboc-sub
- Lujang
- Nakawa
- Panangatan
- Pogow
- Tonggon



- NOTES:
1. Boundaries and coastline digitized by Valencia MPDC mostly from Barangay Section Index Map provided by Valencia Municipal Assessor
 2. Rivers and Creeks digitized by PPDO GIS Unit from NAMRIA Topographic Map sheet 3620-III, scaled at 1:50,000, edition May 1993
 3. Location of Municipal Hall and Barangay Halls verified by Valencia MPDC using Global Positioning System (GPS)
 4. Roads based on the Municipal Roads Database acquired through CRID Project and verified using GPS
 5. Watersheds delineation based on files from Geoplan acquired through the Coastal Resource Management (CRM) Project
 6. This map is for indicative purposes only subject to ground verification



9°44'N
9°42'N
9°40'N
9°38'N
9°36'N

N44°06
N42°06
N40°06
N38°06
N36°06

124°10'E

124°12'E

124°14'E

124°16'E

C:\Users\willow\Documents\GIS\Projects\CLUP_Valech\OGIS\Valach\CLUP_2019-2028\aps\Thematics\Watersheds Map At District N36°06 N38°06 N40°06 N42°06 N44°06