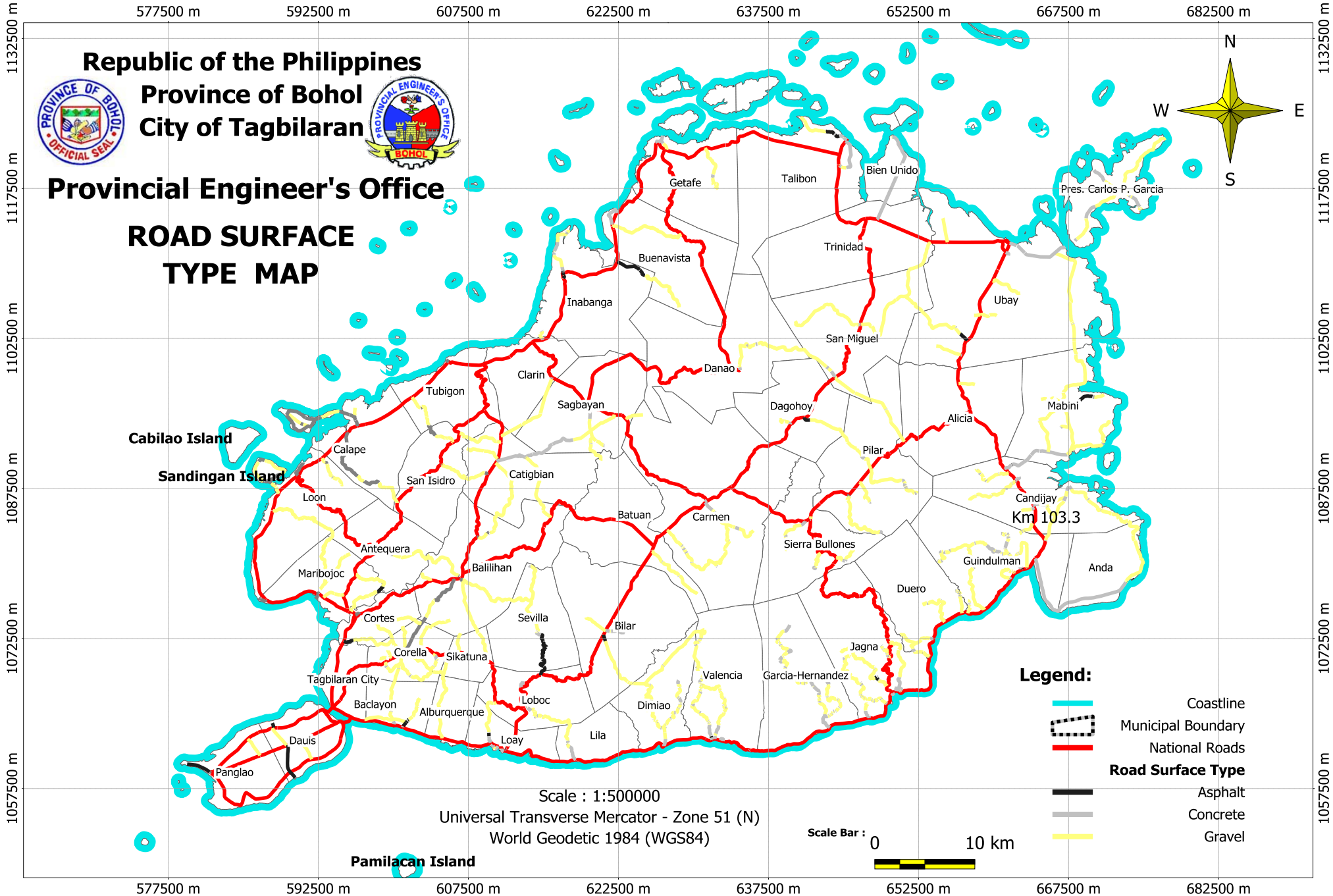
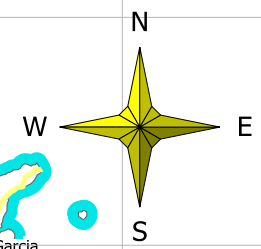




Republic of the Philippines
 Province of Bohol
 City of Tagbilaran

Provincial Engineer's Office

**ROAD SURFACE
 TYPE MAP**









Cabilao Island

Sandigan Island

Pamilacan Island

Legend:

-  Coastline
-  Municipal Boundary
-  National Roads
- Road Surface Type**
-  Asphalt
-  Concrete
-  Gravel

Scale : 1:500000
 Universal Transverse Mercator - Zone 51 (N)
 World Geodetic 1984 (WGS84)

Scale Bar : 0 10 km

Km 103.3

1132500 m
1117500 m
1102500 m
1087500 m
1072500 m
1057500 m

1132500 m
1117500 m
1102500 m
1087500 m
1072500 m
1057500 m

577500 m 592500 m 607500 m 622500 m 637500 m 652500 m 667500 m 682500 m

577500 m 592500 m 607500 m 622500 m 637500 m 652500 m 667500 m 682500 m