

124°29.00'E 124°30.00'E 124°31.00'E 124°32.00'E 124°33.00'E 124°34.00'E 124°35.00'E 124°36.00'E



Republic of the Philippines  
 PROVINCE OF BOHOL  
 City of Tagbilaran



**PROVINCIAL PLANNING AND  
 DEVELOPMENT OFFICE**

**Poverty Database Monitoring System  
 CRIME INCIDENCE**  
 Municipality of ANDA

9°48.00'N

9°47.00'N

9°46.00'N

9°45.00'N

9°44.00'N

9°48.00'N

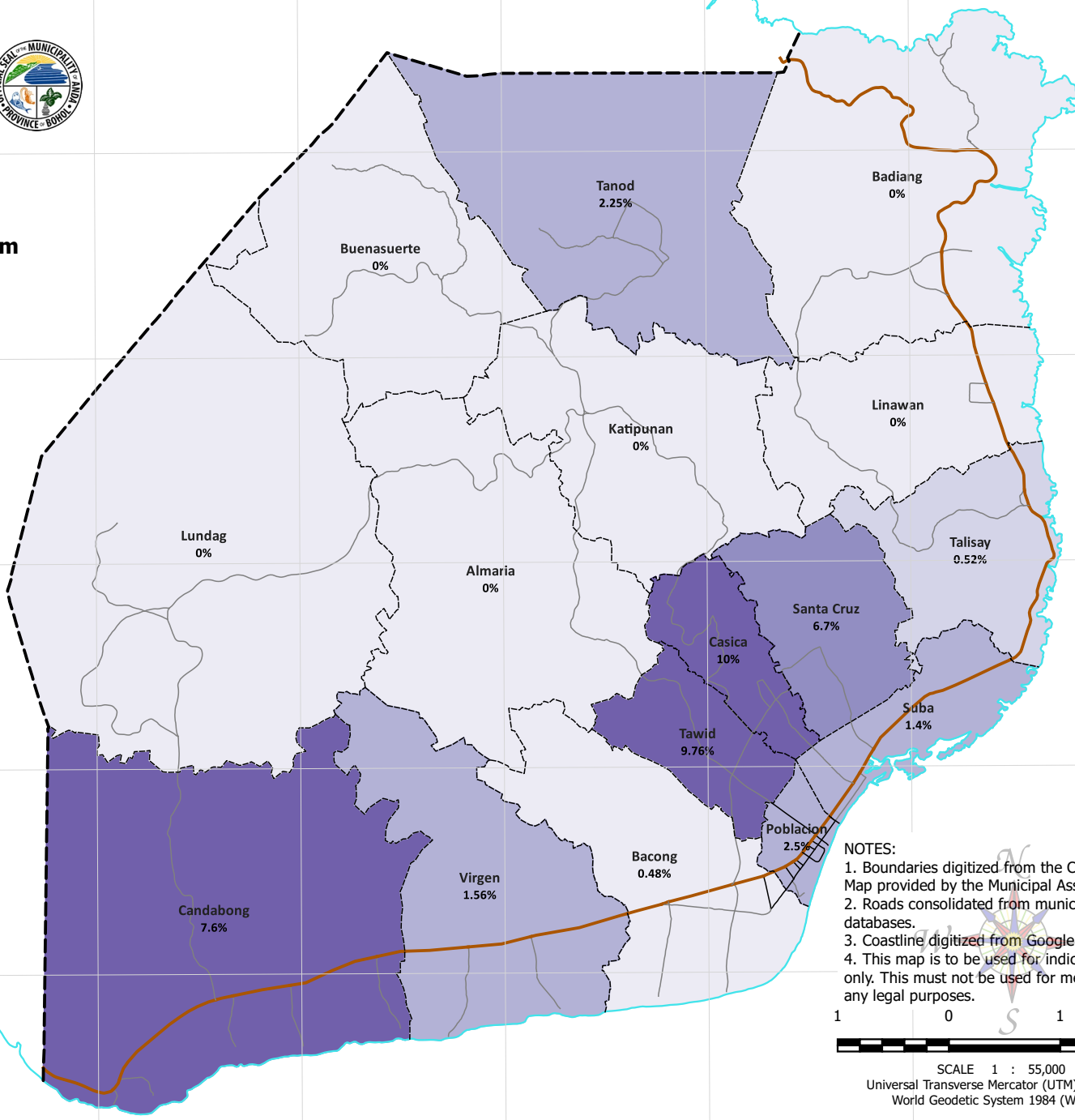
9°47.00'N

9°46.00'N

9°45.00'N

9°44.00'N

124°29.00'E 124°30.00'E 124°31.00'E 124°32.00'E 124°33.00'E 124°34.00'E 124°35.00'E 124°36.00'E



**Legend**

Provincial Road	<b>Crime Incidence</b>
Municipal Road	less than .50%
Barangay Road	0.50% - 1.00%
Municipal Boundary	1.00% - 5.00%
Barangay Boundary	5.00% - 7.50%
Coastline	over 7.50%

**NOTES:**  
 1. Boundaries digitized from the Cadastral Index Map provided by the Municipal Assessor's Office  
 2. Roads consolidated from municipal roads databases.  
 3. Coastline digitized from Google Earth images.  
 4. This map is to be used for indicative purpose only. This must not be used for measurements and any legal purposes.



SCALE 1 : 55,000  
 Universal Transverse Mercator (UTM); 51 North  
 World Geodetic System 1984 (WGS84)