

124°29.00'E 124°30.00'E 124°31.00'E 124°32.00'E 124°33.00'E 124°34.00'E 124°35.00'E 124°36.00'E

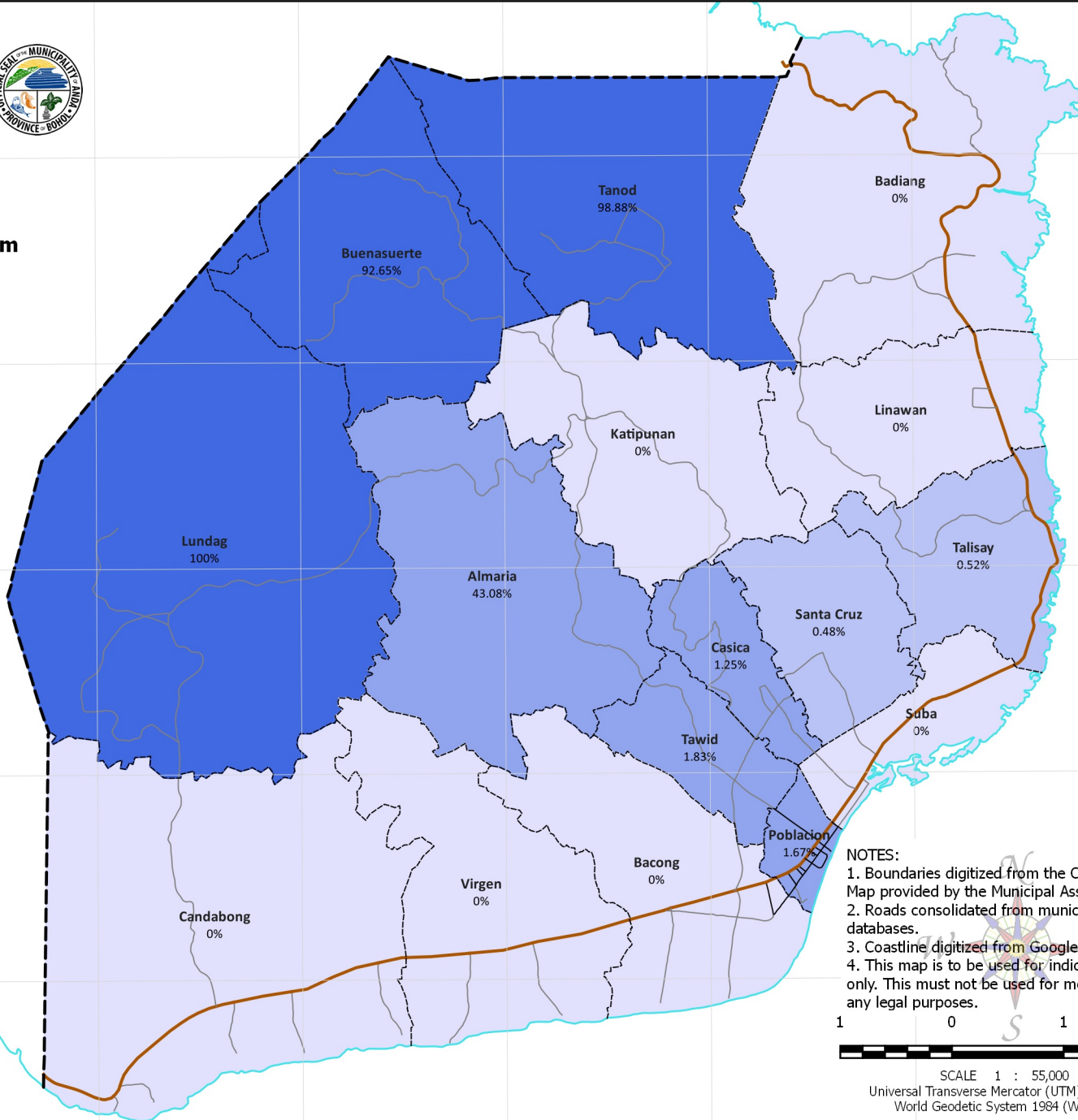


Republic of the Philippines  
 PROVINCE OF BOHOL  
 City of Tagbilaran



**PROVINCIAL PLANNING AND  
 DEVELOPMENT OFFICE**

**Poverty Database Monitoring System  
 HOUSEHOLDS WITH NON-  
 POTABLE/DOUBTFUL WATER**  
 Municipality of Anda



9°48.00'N  
 9°47.00'N  
 9°46.00'N  
 9°45.00'N  
 9°44.00'N

9°48.00'N  
 9°47.00'N  
 9°46.00'N  
 9°45.00'N  
 9°44.00'N

**Legend**

Provincial Road	<b>HHs with Doubtful Water</b>
Municipal Road	
Barangay Road	
Municipal Boundary	
Barangay Boundary	
Coastline	
	less than 0.25%
	0.25% - 1.00%
	1.00% - 50.00%
	50.00% - 75.00%
	over 75.00%

**NOTES:**  
 1. Boundaries digitized from the Cadastral Index Map provided by the Municipal Assessor's Office  
 2. Roads consolidated from municipal roads databases.  
 3. Coastline digitized from Google Earth images.  
 4. This map is to be used for indicative purpose only. This must not be used for measurements and any legal purposes.



SCALE 1 : 55,000  
 Universal Transverse Mercator (UTM); 51 North  
 World Geodetic System 1984 (WGS84)

124°29.00'E 124°30.00'E 124°31.00'E 124°32.00'E 124°33.00'E 124°34.00'E 124°35.00'E 124°36.00'E